



WINDOWMAKER[®]
SOFTWARE



The world's leading software for the window and door industry



40+ YEARS EXPERIENCE

Windowmaker is an established software company with over 40 years of experiences in the window and door industry. With over 11,000+ licences supplied worldwide, we strive to continuously innovate, deliver robust, reliable and flexible software solutions.



35+ DEVELOPERS

Our dedicated team of experts ensures we have a continuous program of development, testing and support. This enables us to respond quickly to the needs of our customers as well as changes in upcoming market trends.



75+ COUNTRIES

We have sold to over 4000 businesses within the window and door industry across the globe. Our single, highly adaptable solution is scalable to businesses - large and small – and is available in over 20 languages.



600+ YEARS R&D

This huge effort and investment have helped us to evolve into one of the most comprehensive window and door software solutions available. Despite the wide range of features, Windowmaker remains extremely easy to use with an intuitive user interface and simplified reporting systems.



MICROSOFT GOLD PARTNER

Our role as a certified Microsoft Gold Partner signifies our commitment to training, quality and service. This ensures we excel on a range of Microsoft platforms giving our customers complete peace of mind.

THE WINDOWMAKER PRODUCT RANGE



Empower your business with Windowmaker Cloud, seamlessly combining our powerful configurator with cutting-edge technology. Hosted on the reliable Microsoft Azure platform, it ensures unmatched access and performance. Simplify operations with flexible, cost-effective subscription-based payments.

SALES

Includes:

- ✓ Hundreds of Standard Designs
- ✓ Quick & Easy 1-off Designs
- ✓ Angled and Arched Shapes
- ✓ Bays / Bows / Georgian / Leaded
- ✓ Entrance Doors / Panels
- ✓ Global Changes
- ✓ Revisions
- ✓ Standard Reports/ Dashboards



ESSENTIALS

Includes:

- ✓ All the Features of Sales
- ✓ Purchase Order Reports
- ✓ Production Work Instructions
- ✓ Bar Optimisation
- ✓ Reusable Offcuts
- ✓ Labels
- ✓ Delivery Reports
- ✓ Installation Instructions

PROFESSIONAL

Includes:

- ✓ All the Features of Essentials
- ✓ Windload
- ✓ Commercial Contracts
- ✓ Optimised Costing / Pricing
- ✓ Purchase & Sub-batching
- ✓ Production Scheduling
- ✓ Remakes
- ✓ Deliveries & Scheduling
- ✓ Installation Scheduling
- ✓ CAD Link



Cloud-Based Security

Manage your business from anywhere. Benefit from Microsoft Azure enterprise-grade security and backups.



Cost-Effective

Enjoy premium features at an affordable price with our subscription packages from a low monthly price.



Customisable Solutions

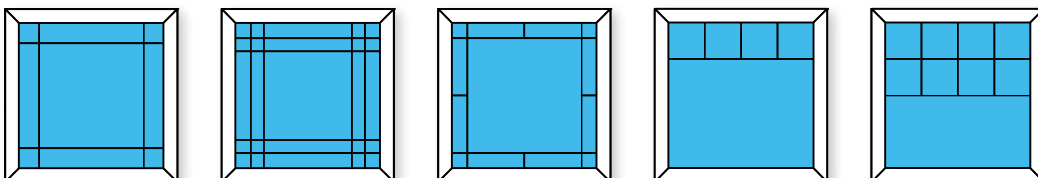
Software that is tailored to your specific end-to-end business process with API and Webhook integrations.

ADVANCED CONFIGURATOR

- ▶ A single software solution for all materials - PVC-U, Aluminium, Wood, Fiberglass, Steel, Composite
- ▶ Intuitive and quick - Increase efficiency and throughput
- ▶ Intelligent Order Entry to eliminate any invalid input with associated costly mistakes

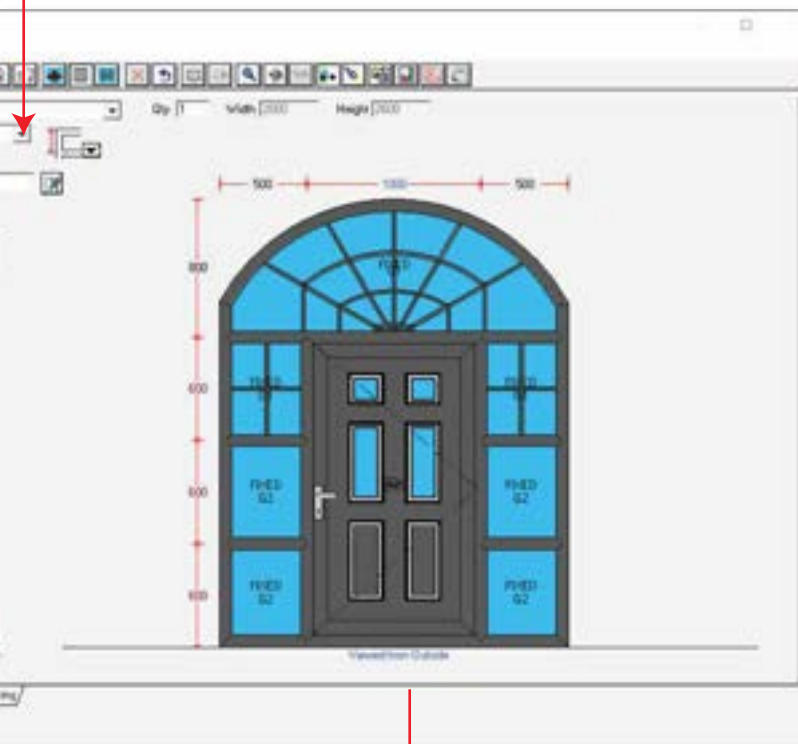
The diagram illustrates the software's configuration process. It starts with a 'Shapes' menu containing icons for various window styles. Red arrows point from these icons to specific design categories: 'Simple Conservatories', 'Bays & Bows', 'Angled', and 'Arched'. Each category is represented by a grid of icons. To the right, a screenshot of the software interface shows a 'Customised Options list' with various settings like 'Frame extension', 'Outer frame', and 'Door 2-Gash'. Below this is an 'Instant Pricing Display and Updates' section with a table showing 'Description', 'Nett', and 'Price'. The table includes items like 'Door' and 'Window - 6x12x6'. To the right of the pricing table is a 'Design Library' and a 'Glass Library' section, both with red arrows pointing to the main interface area.

Quick application of simple or complex Georgian/
Colonial Grids including Sunburst



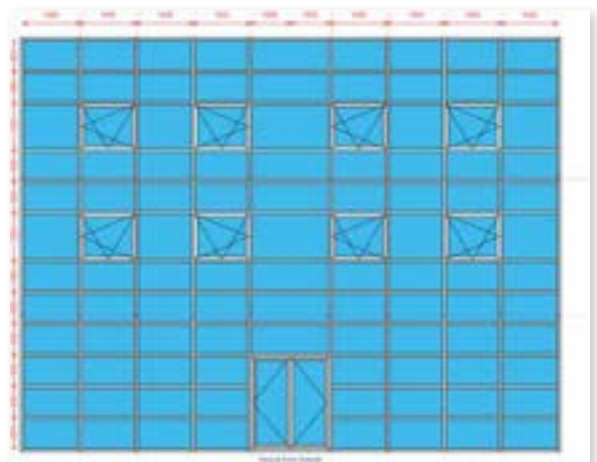
Unrivalled rules-based architecture for flexibility and total control

System Library

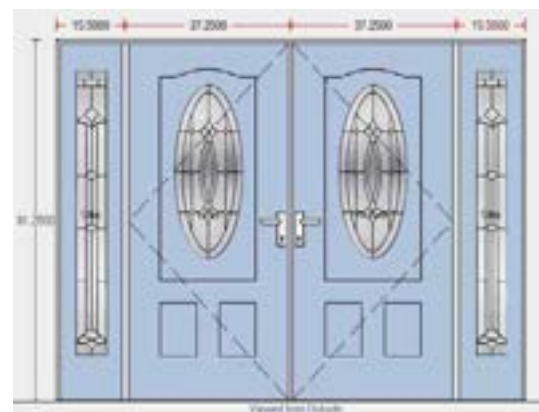


Clear, Detailed, Scaled Colour Graphics - WYSIWYG

Curtain Wall



Entrance Doors

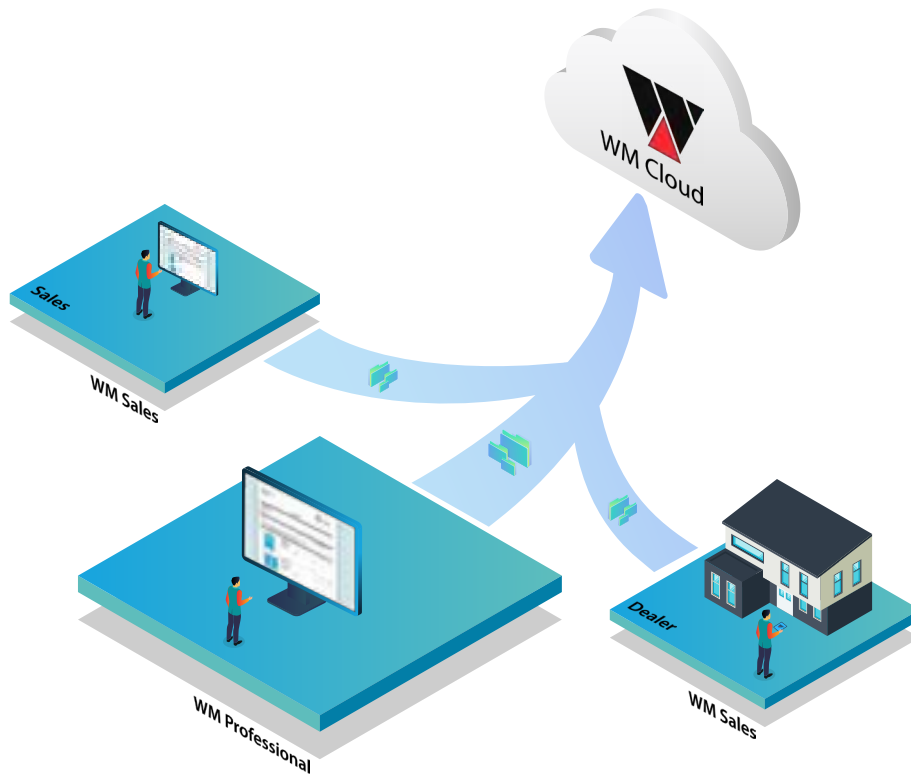


Windowmaker Options

- | | | |
|----------------------------|---------------------|-----------------------|
| ▶ Angled and Arched Shapes | ▶ Georgian & Leaded | ▶ Standard Products |
| ▶ Bays & Bows | ▶ Entrance Doors | ▶ Commercial Projects |
| ▶ Curtain Walling | ▶ Conservatories | |

SALES

Windowmaker Sales/Dealer Implementation



Commercial Projects

Efficiently quote for new construction projects. Manage survey, purchasing, production, delivery and installation in stages within phases.

Maximise profits with error-free quotations and reduced turn-around time

Quotation Documents

Super Quality Windows
12 England Road
Buckley, Sarnes,
W10 6AA, UK

Quotation

Quote No.	Customer Ref	Quote Date	Quote Price (incl. VAT)
0004	00000	03/12/2017	£483.00

Customer Details:
Name: Mr & Mrs
Address: 111, The Crescent, Birmingham Business Park 1, Edgbury, B15 2JG, UK
Phone: 0121 710 0000

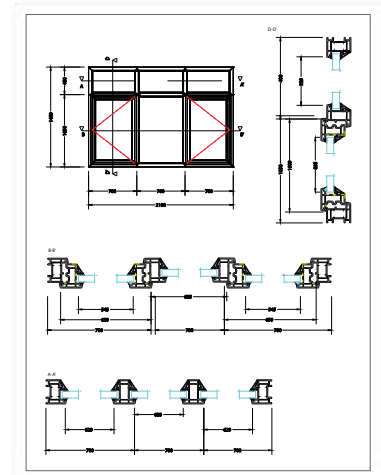
Dear Sirs,
Thank you for giving us the opportunity to provide you with the following quotation. Should you require any further information, please feel free to contact me at 0121 710 0000.

Quote Line:

Quote Line	Description	Quantity	Unit Price	Total Price
001	Living Room Window (10 se Glass) 1180mm x 1200mm (1000mm x 1200mm) in 10-4 Clear Colour Panel 28 Dark red on White	1	478.00	478.00
002	Kitchen Window (10 se Glass) 1180mm x 1200mm (1000mm x 1200mm) in 10-4 Clear Colour Panel 28 Dark red on White	1	105.00	105.00
003	Garage Door (10 se Glass) 1180mm x 1200mm (1000mm x 1200mm) in 10-4 Clear Colour Panel 28 Dark red on White	1	200.00	200.00

Summary:
Total: £783.00
VAT: £156.60
Grand Total: £939.60

Quotation



CAD cross-section

Super Quality Windows
12 England Road
Buckley, Sarnes,
W10 6AA, UK

Design Summary

Image	Description	Specifications
[Image 1]	Living Room Window	1180mm x 1200mm (1000mm x 1200mm) in 10-4 Clear Colour Panel 28
[Image 2]	Kitchen Window	1180mm x 1200mm (1000mm x 1200mm) in 10-4 Clear Colour Panel 28
[Image 3]	Garage Door	1180mm x 1200mm (1000mm x 1200mm) in 10-4 Clear Colour Panel 28

Design Summary

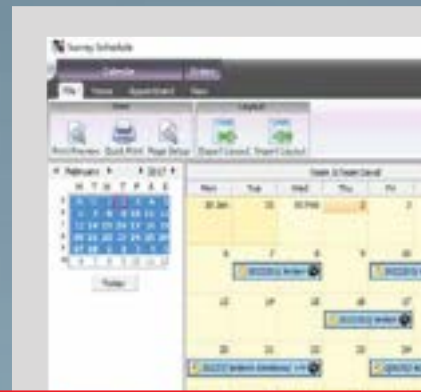
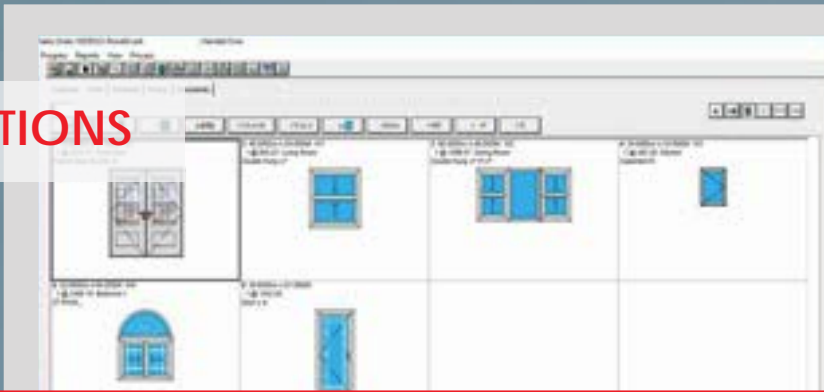


Photo Fronts

Windowmaker Options

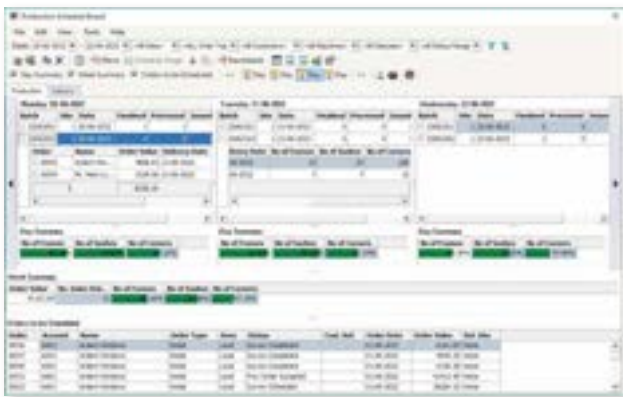
- | | | |
|------------------------------|--------------------------|-----------------------|
| ▶ Pricing via Marked-up Cost | ▶ Customer Special Terms | ▶ Commercial Projects |
| ▶ Optimised Costing | ▶ Global Changes | ▶ Link to CAD |
| ▶ Pricing Extras | ▶ Revisions | |

OPERATIONS



Scheduling

Windowmaker Scheduling enables you to take full control over all operations - Survey, Purchase, Production, Delivery and Installation - by maintaining compatible schedules for each.



Production Scheduling

Purchasing

The Purchasing option allows you to generate and track Purchase Orders for both bought-to-order and stocked components. Send electronic purchase orders to the supplier which they can import directly into their ordering system.



Electronic Purchase Order for Glass

Manufacturing

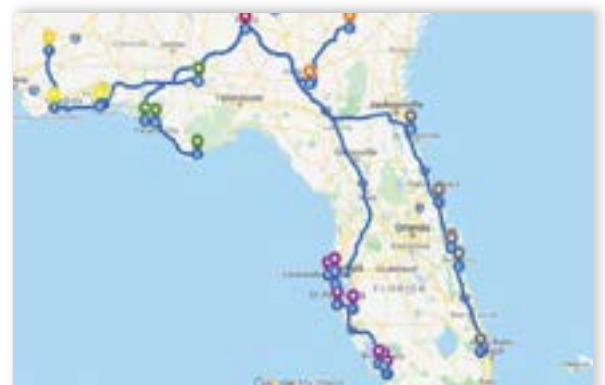
Plan your production considering: Capacity, order value, delivery dates, priority and other factors; Day-wise or week-wise production across work shifts, production lines or even across sites. Optimise the use of available resources and reduce cycle time to maximises production floor throughput. Generate station-wise work instructions (printed reports, labels or control files for the machines).



Production Loading Report to assess Capacity Utilisation

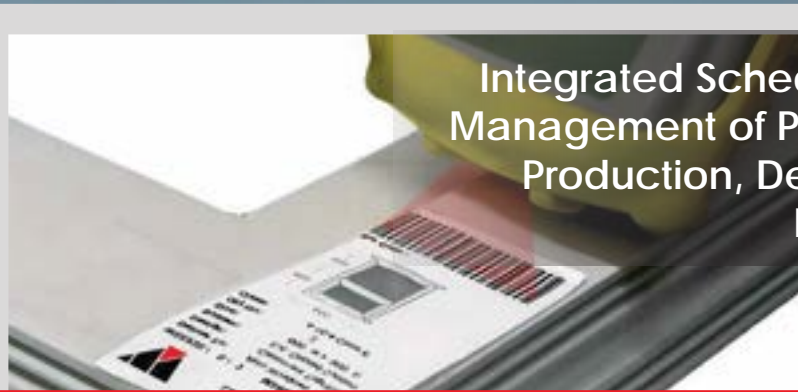
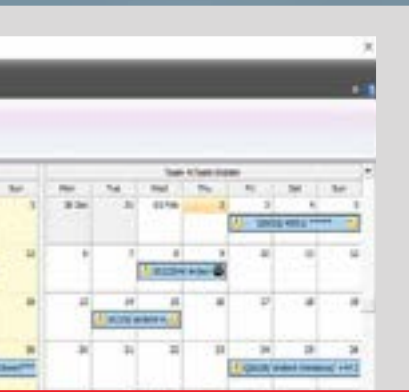
Delivery

Plan delivery for a day/shift/vehicle from a production site on a particular route for optimum uses of resources. Generate the necessary documents/checklists (e.g. Delivery Notes, Picking List, Packing Slips). Easily move goods from one delivery to another to accommodate production schedules or customer requirements.



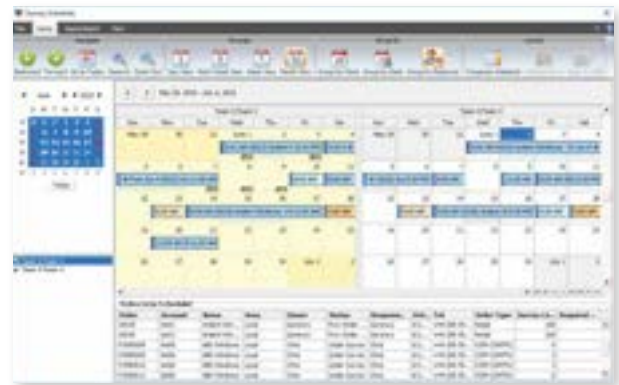
Delivery Route Optimisation

Integrated Scheduling and Management of Purchasing, Production, Delivery and Installation



Survey and Installation

Schedule a Sales Order for survey/installation by an individual or a team depending on their capacity, workload and availability. Monitor the capacity utilisation of individuals or teams. Shuffle and/or Split the allocated orders among multiple teams as required. Generate printed or electronic Survey Sheets.



Survey Schedule Board

Inventory / Stock Control

The Windowmaker Stock Control module enables you to know what, where and how much inventory is on-hand, ordered and allocated. This helps with all activities surrounding effective sourcing, forecasting and replenishment of the inventory. It also minimises holding, replacement and shortage costs of inventories and maximises the efficiency in production and delivery. Let Windowmaker take control of your inventory and give you peace of mind.

Windowmaker Stock Valuation 01-04-2022							
Stock No.	Rate	Physical Qty	Cost (Physical)	On Order Qty	Cost (On Order)	Cost (Total)	
Home							
SUP01 A & B Profiles & Accessories Ltd.							
70200W	4.64	260	1206.40	0	0.00	1206.40	
70250W	2.90	360	1044.00	0	0.00	1044.00	
70250W	4.45	240	1068.00	0	0.00	1068.00	
70250W	3.03	160	484.80	0	0.00	484.80	
70250W	3.27	140	457.80	0	0.00	457.80	
70250W	8.60	240	2112.00	0	0.00	2112.00	
84201W	3.23	360	1162.80	0	0.00	1162.80	
84201W	5.54	200	1108.00	0	0.00	1108.00	
84201W	2.54	360	914.40	0	0.00	914.40	
84400W	6.77	170	1150.90	0	0.00	1150.90	
84800W	1.05	190	199.50	0	0.00	199.50	
84800W	0.96	200	192.00	0	0.00	192.00	
Total			1125.12				

Stock Valuation

Windowmaker Outstanding Stock Purchase Orders 10-07-2022									
Stock No.	Description	P.O. No.	Order Date	Del. Date	Reference	Ordered	Received	Cancelled	Outstanding
Home									
SUP01 A & B Profiles & Accessories Ltd.									
701501W	6mm Outer Frame	PO0004	09-06-2022	22-06-2022	50004	160	0	0	160
702500W	7mm 1" TM	PO0003	01-06-2022	13-06-2022	50003	0	40	0	40
702500W	7mm 2" TM	PO0003	01-06-2022	13-06-2022	50003	0	60	0	60
842011W	11 Slider Frame	PO0004	09-06-2022	22-06-2022	50004	130	0	0	130
842011W	6mm Sliding Sash D	PO0004	09-06-2022	22-06-2022	50004	0	0	0	0
84400W	But Profile	PO0004	09-06-2022	22-06-2022	50004	0	0	0	0
84800W	Cover Profile	PO0003	01-06-2022	13-06-2022	50003	0	40	0	40

Outstanding Stock Purchase Orders

Windowmaker Options

- | | | |
|-------------------------|-----------------------|------------------------------------|
| ▶ Purchase Scheduling | ▶ Purchase Ordering | ▶ Electronic glass orders |
| ▶ Production Scheduling | ▶ Delivery Scheduling | ▶ Survey & Installation Scheduling |
| ▶ Multiple Locations | ▶ Surveying | ▶ Remakes |

MANUFACTURING



Schedule



Cut



Machine



Join

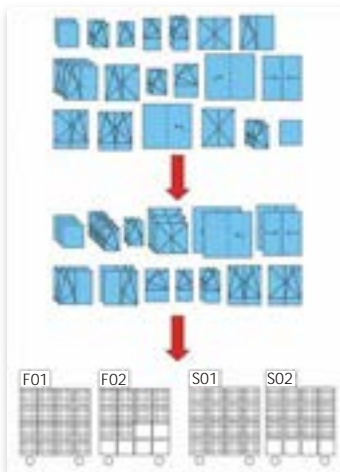


H

Once Sales Orders are batched Windowmaker processes them through Production with a range of optimisation options and the ability to fully automate your manufacturing.

Optimisation

Optimise profile and glass cutting to reduce raw material wastage, avoid offcuts, reduce production costs, improve productivity and better stock management. Optimise the production sequence to improve efficiency and increase throughput.



Sub-batching for Optimised Manufacturing



Sophisticated Automation

Works Instructions

With the orders passed through into Production, Windowmaker can provide a variety of Works Instructions including: Machine Links to a variety of saws, working centres, welders and glass cutting tables.



Bill of Materials



Profile Labels

A unique methodology for efficient manufacturing and handling



Hang



Glaze



Check



Rack



Ship

Tracking

Use barcode technology to keep track of products as they are manufactured and progress down the production line. The Tracking Client also provides clear and comprehensive Works Instructions including dynamically reprioritised Work-To Lists for each station operator. Labels can be printed at these screens.



On screen Works Instructions at sash assembly, Go paperless!



Tracking Report

Labels (Profile, Glass, Frame, Sash)

Generate labels that can serve as work instructions at various stages of production, as well as during delivery and installation. The barcodes on the labels help identify and track the component and sub-assembly throughout the production and thereafter.



Frame Label

Windowmaker Options

For Frame Production		For Glass Production	
▶ Sub-batching	▶ Bar Optimisation	▶ Optimaker	▶ Reusable Glass Offcuts
▶ Profile Pairing	▶ Reusable Offcuts	▶ Sealed Unit Pairing	▶ Multiple Glass Tables
▶ Tracking	▶ Profile & Sash Labels	▶ Cutting Instructions	▶ Multiple Inventory Sizes
▶ Link to Saw	▶ Link to Welder	▶ Optimised Labels	▶ Link to Cutting Tables
▶ Machining Instructions	▶ Link to Working Centre	▶ Toughened Glass Report	▶ Link to Third Party Glass Optimisers

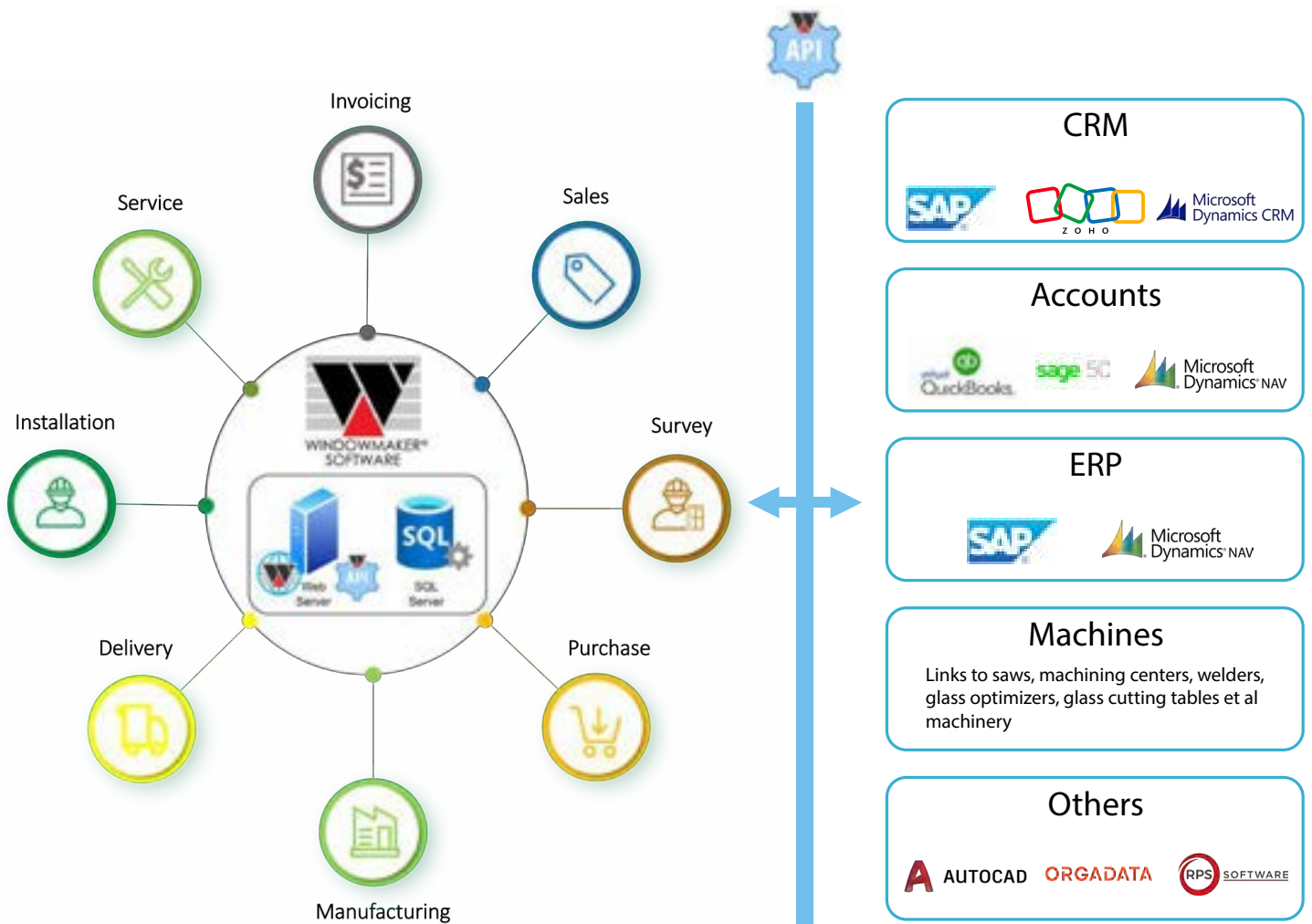
TECHNOLOGY & INTEGRATION

Windowmaker Architecture

Windowmaker leverages the robust infrastructure of Microsoft's Azure cloud services, to deliver it's solution. Powered by Microsoft SQL Server, Windowmaker seamlessly integrates its comprehensive features while ensuring optimal performance and uptime reliability.

Scalability

Windowmaker's architecture has been designed to adapt and scale alongside your business growth, ensuring seamless expansion and operational excellence at every stage.



Microsoft Partnership to ensure robust solutions with latest technology

API Integrations

Through documented APIs, Windowmaker effortlessly integrates with leading applications in CRM, Accounts, ERP, and machinery links, catering to diverse business needs and ensuring a 'best-in-class' solution.

Customised Labels



NFRCC Label

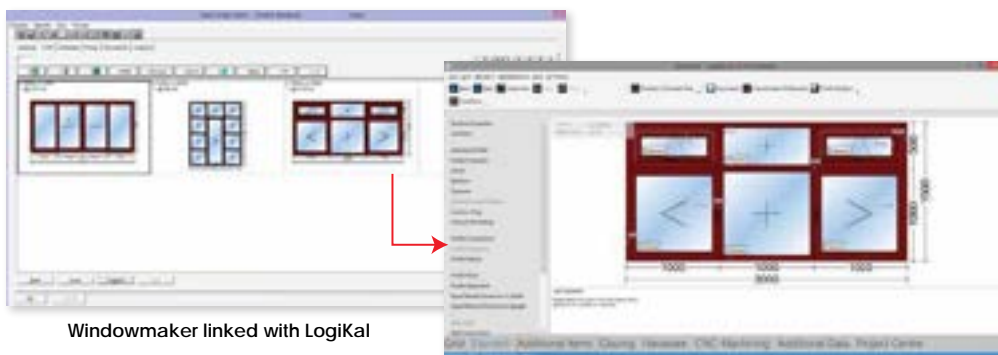


Energy Star Rating



CE Label

Other configurators like RoofWright and LogiKal can be invoked from Windowmaker. Get the best of many worlds!



Windowmaker linked with LogiKal

Windowmaker Options

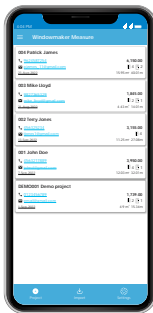
- | | | |
|----------------------|------------------------------|----------------|
| ▶ Link to SAP | ▶ Link to Microsoft Dynamics | ▶ Link to CAD |
| ▶ Link to QuickBooks | ▶ Link to Sage | ▶ Link to MYOB |
| ▶ Link to LogiKal | ▶ Link to RoofWright | |

WINDOWMAKER MEASURE



Overview

Windowmaker Measure, available on Android as well as iOS, is an all-in-one surveying and quoting solution for installers, surveyors and sales people. It allows them to not only record measurements but also instantly generate then e-share professional quotations and measuring reports.



Organise

Keep your projects in one place. Track all of your exported documents in your document library.



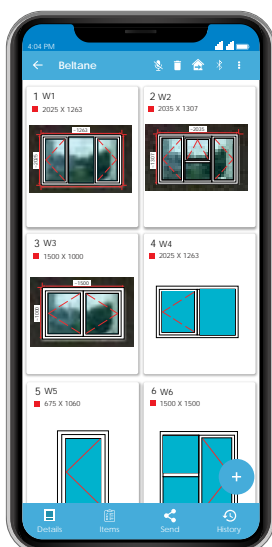
Measure

A digital survey sheet at your fingertips, with automatic frame size calculation. Simple, powerful interface for initial quoting & quick input. Link directly to your laser measure & reduce human error.



Quote

High quality quotes at the press of a button. Show your customer their window with our extensive selection of product styles. Send quotes & RFQs straight from your device.



List of items in Quote



Electronically Shareable Measurement Sheet

An easy-to-use mobile app for surveyors and sales teams



Smart

Take multiple measurements and have them checked against each other automatically. calculate frame sizes from customisable clearances.



Fast

Use laser measures to instantly store a measurement in your device. Send quotes on the spot.

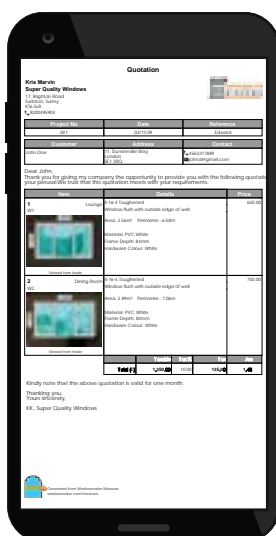


Easy

Simple to use, powerful interface
Less paperwork.



Automatic measurements via bluetooth using Bosch laser device



Download the app today

Electronically Shareable Quotation

Powerful Configurator

Create designs for any of PVC-U, Aluminium, Wood, Steel, Composite profile systems

Variety of Angled and Arched Shapes

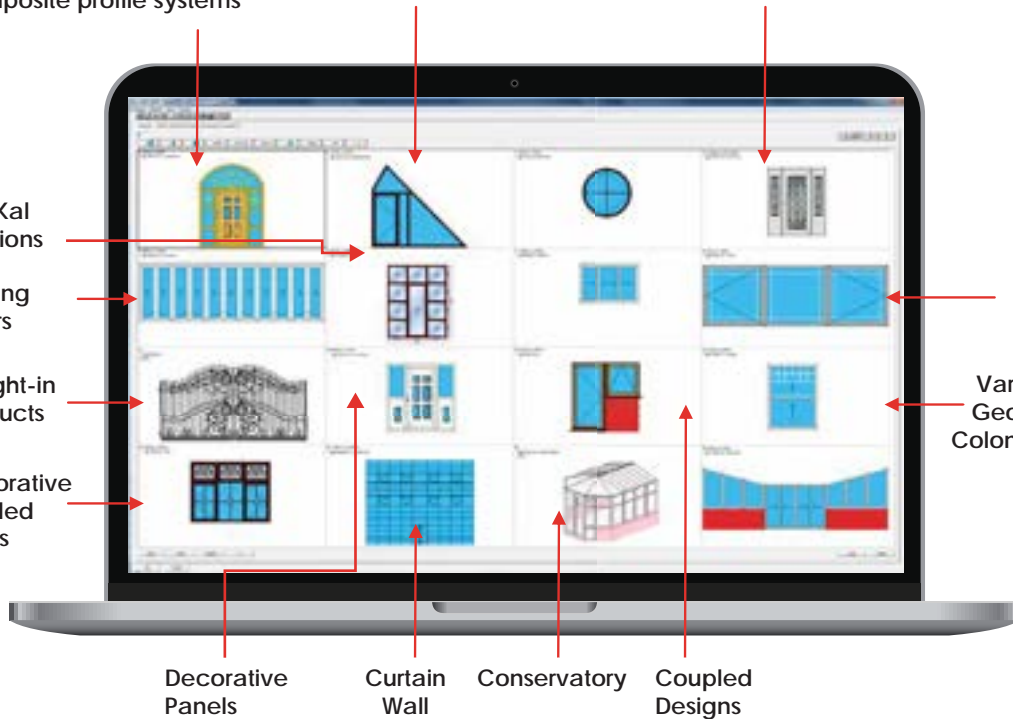
Door Slabs with Decorative Glass Inserts

LogiKal Positions

Folding Doors

Bought-in Products

Decorative Leaded Glass



PVC-U, Aluminium, Wood, Fibreglass, Steel & Composite products handled by the powerful Windowmaker Configurator.

UK	+44 203-8211456	Ian
Ireland	+44 28 9035 1188	Michael
North America (English)	+1 (647) 694 1903	Bhairavi
North America (Francophone)	+1 (416) 762 5299	Adingra
Asia	+91 265 234 2716	Pratap
Australia	+61 3 9773 3966	Peter
France	+33 6 28 32 85 70	Halim
Germany	+49 36642 28002	Wolfgang
China	+86 15305311406	Lawrence