



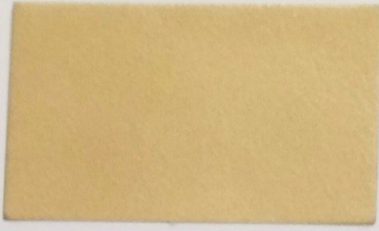
**NIVERACOAT**  
POWDER COATINGS

**26**  
YEARS  
OF EXCELLENCE

**NIVERACOAT**  
POWDER COATINGS

Web. : [www.niverapaints.com](http://www.niverapaints.com)





METALLIC PARTH GOLD  
HYM-1037



BRIGHT GOLD  
HYM-1013



TOPAZ GOLD  
HYM-1860



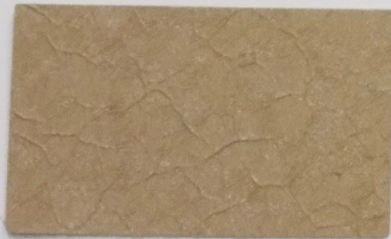
ALLIGATOR GREEN  
Ayy-2140



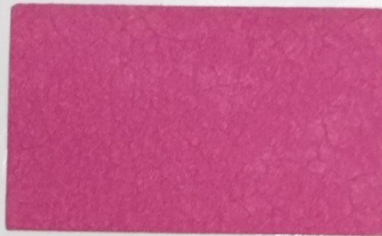
ALLIGATOR PURPLE  
Ayy-7412



ALLIGATOR COOL BLUE  
Ayy-1422



ALLIGATOR BEIGE  
Ayy-3810



ALLIGATOR DARK PINK  
Ayy-6227



ALLIGATOR BROWN  
Ayy-9402



ALLIGATOR FLORA BLUE  
Ayy-1913



ALLIGATOR FLINT GREY  
Ayy-6035



ALLIGATOR BEAN MAROON  
Ayy-5305



ANTIQUÉ WHITE  
HYA-0363



ANTIQUÉ RED  
HYA-5443



ANTIQUÉ SILVER  
HYA-9013



ANTIQUÉ COPPER  
HYA-9033

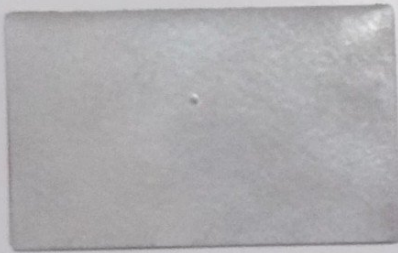


ANTIQUÉ BLUE  
HYA-1144

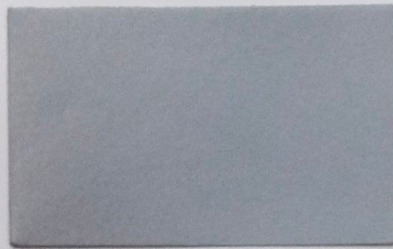


ANTIQUÉ GOLD  
HYA-9023





SILVER MIRROR-2  
HYM-6277



SILVER ROCK  
HYM-9421



GLOSSY LIGHT SILVER  
HYM-6307



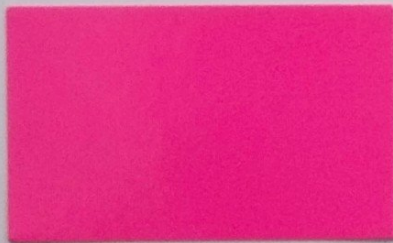
SPARKLE SILVER  
HYM-9179



GLOSSY NICKLE  
HYM-6234



METALLIC INDIGO BLUE  
HYM-5055



FLUORESCENT PINK  
HYF-6116



FLUORESCENT ORANGE  
HYF-5116



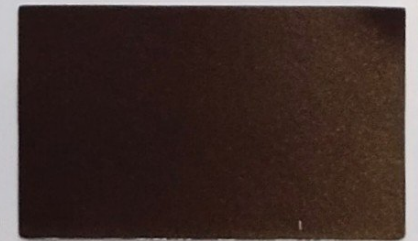
FLUORESCENT GREEN  
HYF-2116



METALLIC LILY BLUE  
HYM-5065



METALLIC ROSE PINK  
HYM-1174



RUSTY COPPER  
HYM-1042



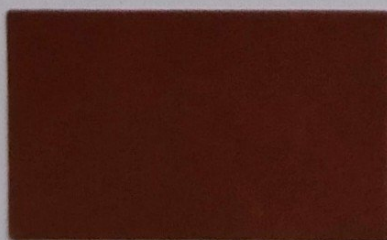
TPR CANDY PINK  
TPR-0039



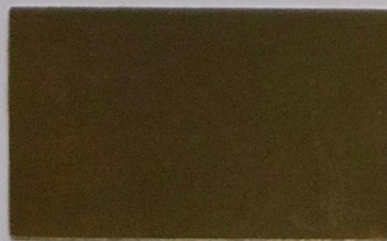
TPR RED  
TPR-0031



TPR AQUAMAEINE  
TPR-0062



TPR COPPER  
TPR-0002



TPR PENDENT BRASS  
TPR-0091

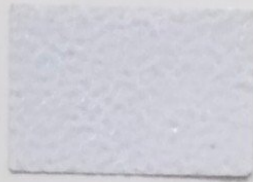


TPR BLACK  
TPR-0015

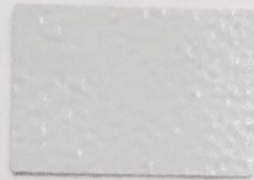




STR LOTUS WHITE  
HYS-0236



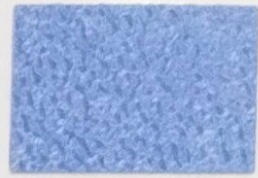
STR WHITE  
HYS-0363



STR RAL 9010  
HYS-9010



STR FERNI WHITE  
HYS-3241



STR ULTRA BLUE  
HYS-1152



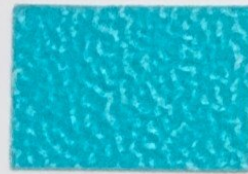
STR VIB BLUE  
HYS-1102



STR ARENA BLUE UNIT  
HYS-1333



STR DEEP BLUE  
HYS-1323



STR COOL BLUE  
HYS-1422



STR WATER GREEN  
HYS-8029



STR MAROON  
HYS-5503



STR GOLDEN YELLOW  
HYS-3522



STR ORANGE  
HYS-5912



STR SIGNAL RED (OL)  
HYS-5294



STR JC RED NEW  
HYS-5144



STR BEAN MAROON  
HYS-5305



STR PINK (T)  
HYS-6233



STR LILAC  
HYS-7013



STR PURPLE  
HYS-7722



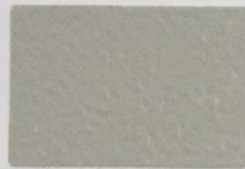
STR CAMEL GREY  
HYS-5134



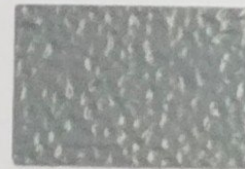
STR RAL 7032  
HYS-7032



STR MATT BLACK  
HYS-6320



STR SIEMENS GREY  
HYS-6222



STR MUNSHELL GREY  
HYS-6013



STR RAL 7035  
HYS-7035



STR LIGHT BROWN  
HYS-4553



STR DARK BROWN  
HYS-4393



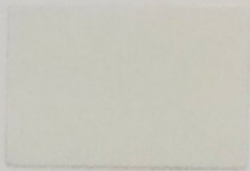
STR DA GREY  
HYS-6343



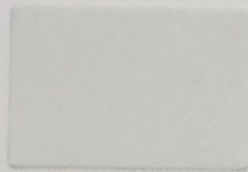
STR RAL 7016  
HYS-7016



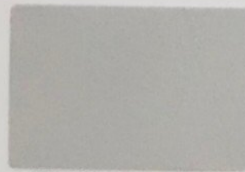
STR BLACK  
HYS 9252



TEX RAL 9010  
HYT-9010



TEX J WHITE  
HYT-0905



TEX MIDAS GREY  
HYT-0587



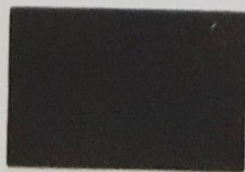
PP TEX LED GREY  
PPT-6179



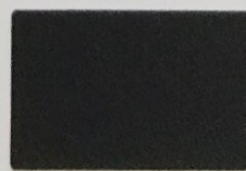
TEX DA GREY (K)  
HYT-6313



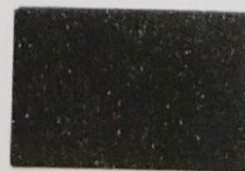
TEX LUMINOUS BLUE  
HYT-6901



TEX DARK GREY  
HYT-6466



TEX RAL 7021  
HYT-7021



SPARKLE TEX BLACK  
HYM-9402

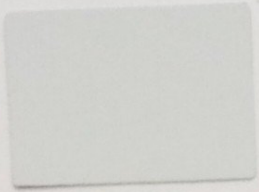


TEX BLACK  
HYT-9402

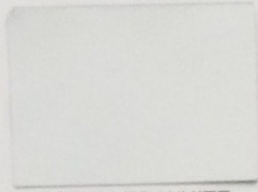
**TEXTURE**



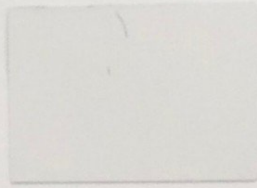
**MATT**



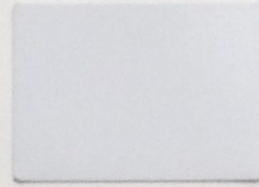
WHITE (HR)  
HYY-9514



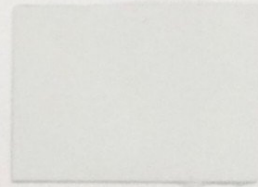
MATT LED WHITE  
HYZ-0312



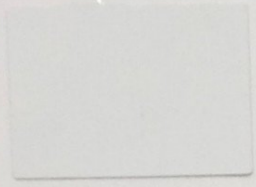
MATT RAL 9001  
HYZ-9001



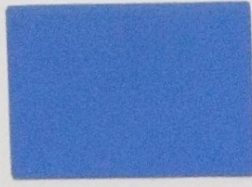
NEW MATT BUTTER WHITE  
HYZ-9417



MATT RAL 9010  
HYZ-9010



MATT RAL 9016  
HYZ-9016



MATT KANGAROO BLUE  
HYZ-1394



MATT AZURE BLUE  
HYZ-1051



MATT CROMPTON BLUE  
HYZ-9428



MATT DARK TORQUISH GREEN  
HYZ-1421



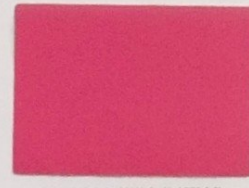
MATT PURPLE  
HYZ-7412



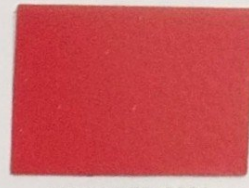
MATT GOLDEN YELLOW  
HYZ-3561



MATT MAROON (S)  
HYZ-4906



MATT PINK (NEW)  
HYZ-5422



MATT RED-3001  
HYZ-3001



SAND BEIGE  
HYZ-3897



MATT ARTIC BROWN  
HYZ-4603



MATT VIP BROWN  
HYZ-4413



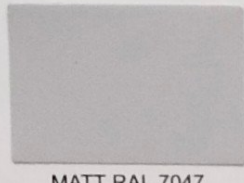
MATT HARDWARE BROWN  
HYZ-4407



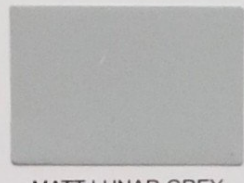
MATT BC BROWN (B)  
HYZ-4022



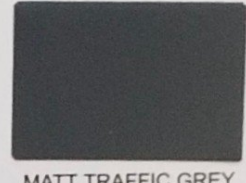
MATT LILAC  
HYZ-7013



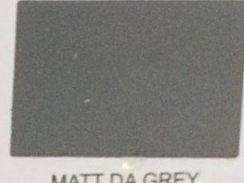
MATT RAL 7047  
HYZ-7047



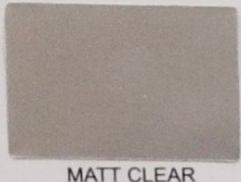
MATT LUNAR GREY  
HYZ-6401



MATT TRAFFIC GREY  
HYZ-6103



MATT DA GREY  
HYZ-6141



MATT CLEAR  
HYZ-0002



MATT BLACK  
HYZ-9401



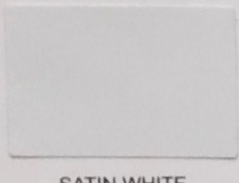
EP MATT BLACK  
HYZ-9452



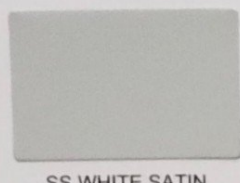
MATT BLACK (CO)  
HYZ-0819



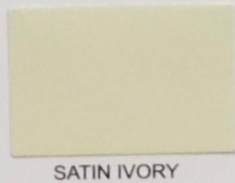
DEAD MATT BLACK  
EPZ-9150



SATIN WHITE  
HYY-0912



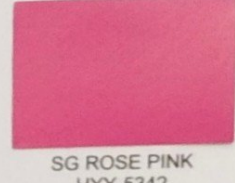
SS WHITE SATIN  
HYY-0527



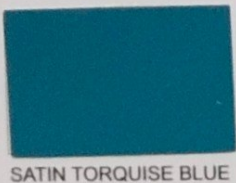
SATIN IVORY  
HYY-3112



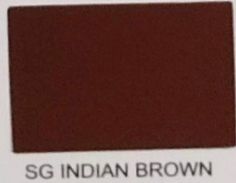
SG YELLOW ORANGE  
HYY-6632



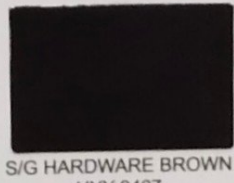
SG ROSE PINK  
HYY-5342



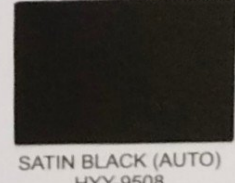
SATIN TORQUISE BLUE  
HYY-1124



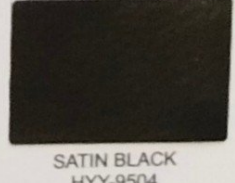
SG INDIAN BROWN  
HYY-4594



S/G HARDWARE BROWN  
HYY-9407



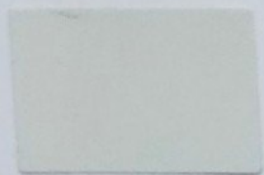
SATIN BLACK (AUTO)  
HYY-9508



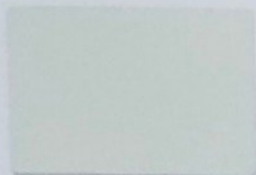
SATIN BLACK  
HYY-9504

**SEMI GLOSSY**

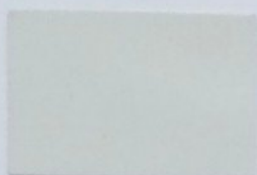




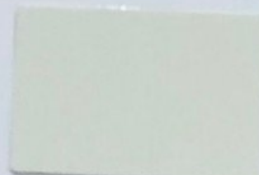
GLOSSY ANCHOR IVORY  
HYX-3049



GLOSSY IVORY (AB)  
HYX-3419



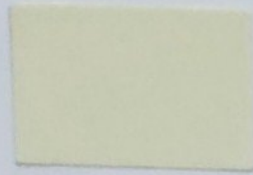
GLOSSY SUPER IVORY  
HYX-3099



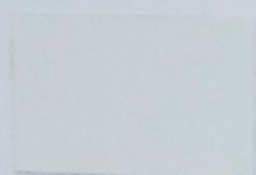
NEW GLOSSY 5001  
HYX-5001(A)



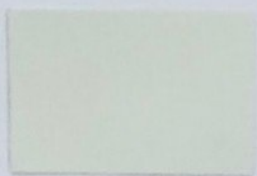
GLOSSY IVORY (GULTEC)  
HYX-3009



GLOSSY IVORY 5001  
HYX-5001



GLOSSY LIGHT CREAM  
HYX-4577



GLOSSY IVORY (M)  
HYX-3059



GLOSSY LEMON YELLOW  
HYX-3589



GLOSSY GOLDEN YELLOW  
HYX-3569



GLOSSY GOLDEN YELLOW (HH)  
HYX-3571



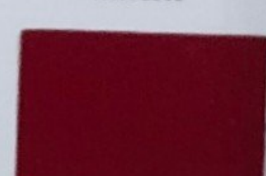
GLOSSY SIGNAL RED  
HYX-5379



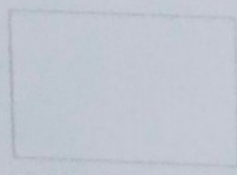
GLOSSY P.O. RED  
HYX-5389



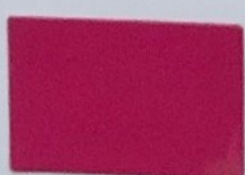
GLOSSY FERRARI RED  
HYX-5949



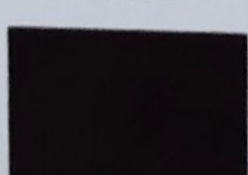
GLOSSY WINE RED (R)  
HYX-5469



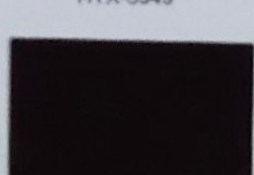
GLOSSY RUBINE PINK  
HYX-5499



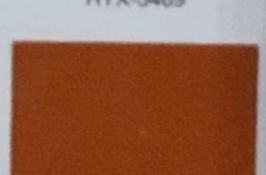
GLOSSY PINK (CH)  
HYX-5199



GLOSSY BROWN  
HYX-4569



GLOSSY COFFEE BROWN  
HYX-4579



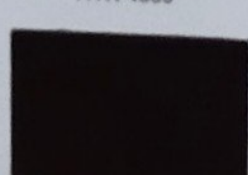
GLOSSY TEAK BROWN  
HYX-4549



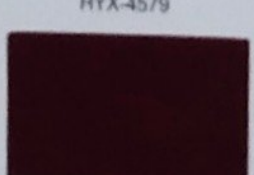
GLOSSY WONDER BROWN  
HYX-4001



GLOSSY ALMOND BROWN  
HYX-4559



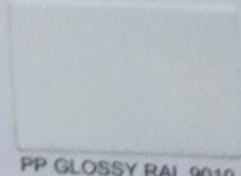
GLOSSY BROWN (G)  
HYX-4012



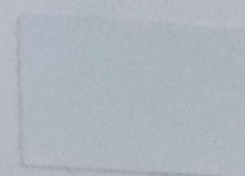
GLOSSY WINE RED (NEW)  
HYX-5470



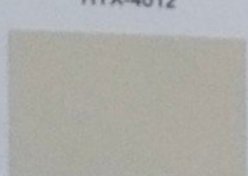
GLOSSY BROWN (CH)  
HYX-4010



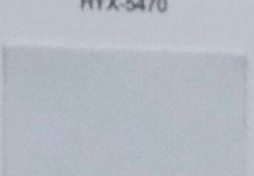
PP GLOSSY RAL 9010  
PPX-9010



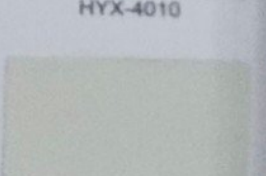
PP GLOSSY RAL 9016  
PPX-9016



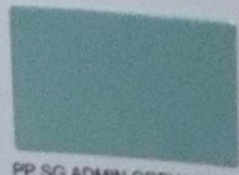
PP MATT RAL 9010  
PPZ-9010



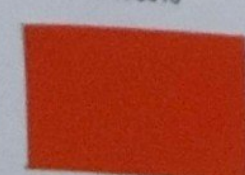
PP MATT RAL 9016  
PPZ-9016



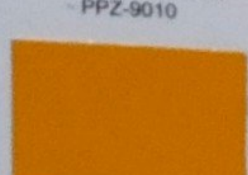
PP GLOSSY IVORY (MG)  
PPX-3009



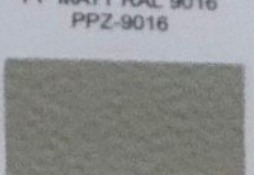
PP SG ADMIN GREY WAVES  
PPY-5394



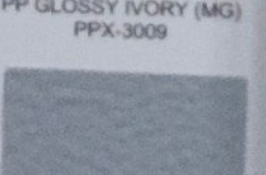
PP GLOSSY ORANGE  
PPX-5929



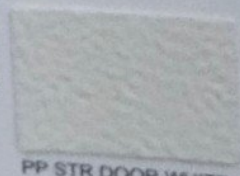
PP GLOSSY GOLDEN YELLOW  
PPX-3569



PP STR RAL 7032  
PPS-7032



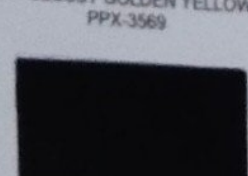
PP STR RAL 7035  
PPS-7035



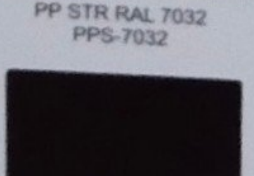
PP STR DOOR WHITE  
PPS-0510



PP SATIN COFFEE BROWN (JP)  
PPY-9419



PP SATIN BLACK  
PPY-9504



PP GLOSSY DARK BROWN  
PPX-4039



PP GLOSSY BLACK  
PPX-9009

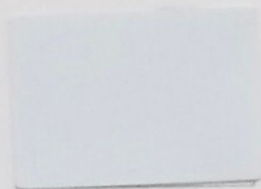
Shades are approximately matched

**PURE POLYESTER**

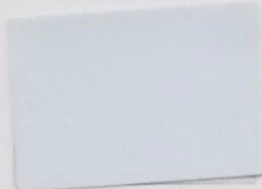




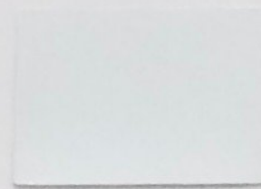
GLOSSY WHITE  
HYX-0509



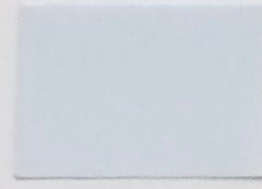
GLOSSY INDIGO WHITE  
HYX-0513



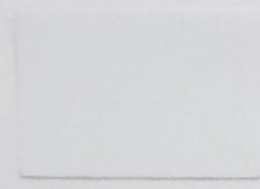
GLOSSY MILKY WHITE  
HYX-0559



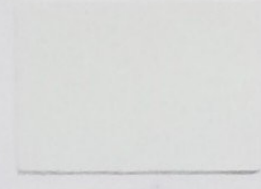
GLOSSY WHITE (SB)  
HYX-0512



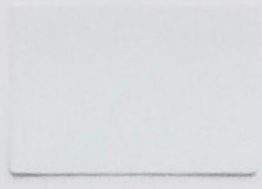
GLOSSY BASE WHITE  
HYX-0549



GLOSSY RAL 9003  
HYX-9003



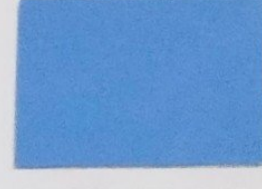
GLOSSY RAL 9010  
HYX-9010



GLOSSY RAL 9016  
HYX-9016



GLOSSY SKY BLUE  
HYX-1769



GLOSSY ULTRA BLUE  
HYX-1159



GLOSSY VIP BLUE  
HYX-1289



GLOSSY COOL BLUE  
HYX-1422



GLOSSY DEEP BLUE  
HYX-1329



GLOSSY PEPSI BLUE  
HYX-1409



GLOSSY BLUE (MGF)  
HYX-1409



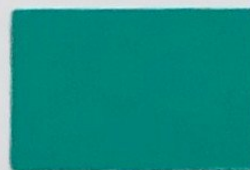
GLOSSY LILAC  
HYX-5388



GLOSSY FLOWER GREEN  
HYX-2531



GLOSSY BUS GREEN  
HYX-2999



GLOSSY PANTONE 3275 (C)  
HYX-3275C



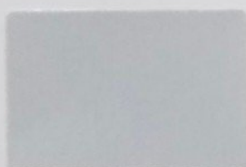
GLOSSY LIGHT ORANGE  
HYX-5939



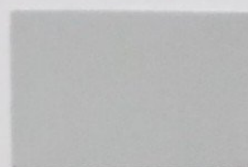
GLOSSY ORANGE  
HYX-5929



GLOSSY ORANGE (HH)  
HYX-5919



GLOSSY GREY WHITE  
HYX-6546



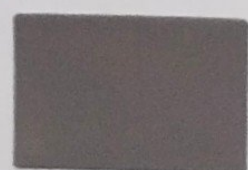
GLOSSY NEW HAVELLS GREY  
HYX-6349



GLOSSY SIEMENS GREY  
HYX-6289



GLOSSY DARK BEIGE  
HYX-4339



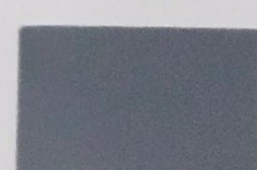
GLOSSY ASH GREY  
HYX-6539



GLOSSY WONDER GREY  
HYX-6049



GLOSSY MUNSHELL GREY  
HYX-6019



GLOSSY MUNSHELL GREY (SPL)  
HYX-6029



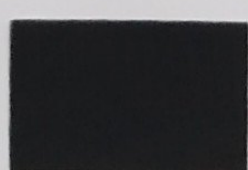
GLOSSY RAL 7016  
HYX-7016



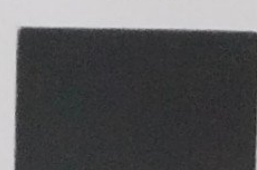
GLOSSY SMOKE GREY  
HYX-6925



GLOSSY GE GREY  
HYX-6259



GLOSSY INDO GREY  
HYX-6069



GLOSSY COSMIC GREY  
HYX-6560



NEW GLOSSY DA GREY  
HYX-6269



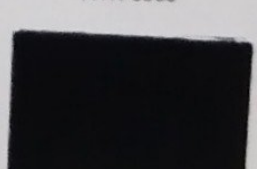
GLOSSY USAKA GREY  
HYX-6993



GLOSSY STEEL GRAY  
HYX-6052



GLOSSY BLACK  
HYX-9009



SUPER GLOSSY BLACK  
HYX-9019



## RELATIVE PERFORMANCE OF POWDER COATING

PROPERTY	EPOXY (Anhydride)	EPOXY POLYESTER (Hybrid)	PURE POLYESTER TGIC	POLYURETHANE (BLOCKED) DI-ISOCYANATE
Flexibility	8	6	8	8
Adhesion	9	8	7	7
Impact	5	7	8	8
Appearance	7	6	7	9
Stain resistance	7	6	7	9
Heat resistance	5	7	8	9
Humidity	9	8	6	6
Salt spray	9	8	6	6
Detergent resistance	9	8	6	6
UV Colour change	2	3	8	8
Boiling Water	5	8	8	5
10% sodium hydroxide	7	7	3	6
10% Hydrochloric Acid	6	6	6	6
Aliphatic Hydrocarbon	10	8	8	8
Ethyl Acetate	5	3	3	3

Note : 3=Poor, 5=Good, 8=Very Good, 10=Excellent

## DRY STORAGE CONDITIONS

Under normal warehouse condition (30 deg, C, RH + 60% appr.). Nivera powders will remain stable in closed cartons for 6 to 12 months. At high temperature the self life is reduced. Keep power carton away from oven and direct sunlight.

### Applications

By electrostatic spray gun (60-96 kV Gun Voltage), fluidized bed and chamber coating.

### Important

Antiques, metallic (smooth) requires clear over coating for better durability. Use low gun voltage (20 to 40 kV) for Metallic powders.

For uniform pattern of Antiques, Textures, Structure and Hammertone, the oven temperature should be above 140 deg. C at the time of loading

P.P : PURE POLYESTER  
 EP : EPOXY  
 HY : HYBRID  
 X : GLOSSY  
 E : HAMMERTONE  
 A : ANTIQUE  
 M : METALLIC  
 S : STRUCTURE (COARSE)  
 T : TEXTURE  
 Y : SATIN  
 Z : MATT  
 W : WRINKLE  
 AY : ALLIGATOR

New shades can be developed upon request.



(UNIT-I)



(UNIT-II)

Vol : 6

# NIVERA PAINTS (INDIA) PVT. LTD.

(AN ISO 9001 : 2015 CERTIFIED CO.)

(Unit-I) Plot No. 689, Sector 69, IMT, Faridabad-121004 Haryana, India

(Unit-II) Plot No. 700, Sector 69, IMT, Faridabad-121004 Haryana, India

Phone : +91-9911017299, +91-9891206088, +91-9540334721, Telefax : +91-129-4096015

E. Mail : [info@niverapaints.com](mailto:info@niverapaints.com), [export@niverapaints.com](mailto:export@niverapaints.com)

Web : [www.niverapaints.com](http://www.niverapaints.com)

