



K BOND



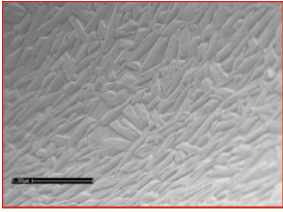
*Something Special in*

GLASS



# Nano Technology for Glass & Ceramic

- Anti-Static • Protective Coating • Cuts cleaning time by up to 90% • Easy to clean • Created using



Microscopic images of glass surfaces structures, and take a close look at what most people believe is a very smooth surface.

**Why glass need maintenance :** Glass is often thought to be invulnerable except for breakage, but will in fact corrode or stain if permitted. surface corrosion or staining is often caused by the deposition of dissolved or suspended minerals in water droplets which are allowed to dry and harden on the glass. As the contaminated water droplets evaporate, the minerals (or salts) become more concentrated and form strong chemical bonds with the glass itself, leading to residues or stains that are difficult to remove, or a permanently damaged etched surface.

## New coating technology for glass & ceramic substrates.

The easy to clean effect appears from a chemical reaction of a sol gel solution. After the curing a cross linked three dimensional and only a few atoms thick nanoscale structure is created. This structure gives the glass an extremely durable hydrophobic effect.

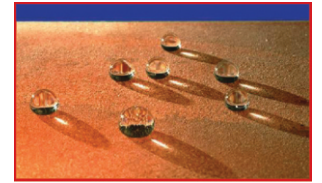
The completely invisible treatment cannot be removed by water, cleaning agent or with high pressure equipment.

The extreme thin coating is a result of the lowest consumption rate on the market. Coverage rate up to 400 square meters per liter (14,000 square foot per gallon) are possible. Nanovations is the most cost effective and fastest to apply glass coating solution available.

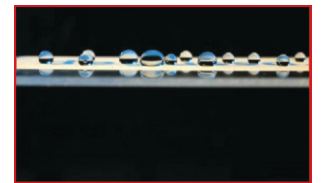
A special abrasive cleaning system was developed to prepare the glass and remove contaminations prior the treatment.

**KG 1010 coating in combination with KL 40 is now available for the use on all glass surfaces like:**

- Car and truck windscreens • Building windows and glass • Farming machine windscreens • Aviation glass • Boat and yacht glass • Shower Cubicles • Mining equipment glass • Ceramics tiles & Products



Images of coated glass substrate



Images of coated glass substrate

**We can supply special kits for small area applications, or for product trial, packed with a unique surface preparation or in bulk for resellers and applicators.**

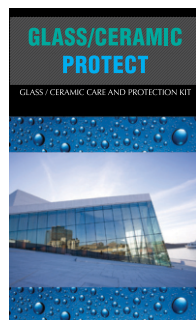
## GLASS/CERAMIC PROTECT

**The Kit can be used for the below applications:**

- Windows and sky lights • Wind screens, automotive and marine • Glass facades • Shower screens • Pool fences Balustrades • Solar Panel • Ceramic Products

**The Kit Contains:**

- 45ml KL40 surface preparation
- 45ml KG1010 (Nano Coating)
- 9" x 9" non-woven - 2pcs
- Instruction manual. 15 -16 m<sup>2</sup> of glass coating (up to 150 - 160 sq. foot)



## SHOWER PROTECT BENEFITS

- Repels water and dirt • Easy to clean/self cleaning effect • Long lasting, durable protection • Scratch resistant, hard coating • Easy and fast to apply • Enable cleaning without harsh chemicals Shower Protect is sold in more than 40 countries.

It is recommended by leading shower screen manufacturer and glass factories in the USA, China, Europe and Australia.

- Glass Shower Screen • Glass splash backs • Glass Basins • Glass and glazed tiles • Glass Floors

**The Kit Contains:**

- 50ml CL 50 Abrasive Glass Cleaner • Three Wipes of KG1010 (Nano Coating) • Sponge for cleaning glass • 300mm x 300mm Microfiber Towel • Instruction manual. The Kit contains coating for one Shower Cubical.



## VISION PROTECT BENEFITS

- Repels water, dirt, dust, salt and ice • Easy to clean/self cleaning effect • Long lasting, durable protection • Scratch resistant, hard coating • Improves night vision • Easy and fast to apply • For car and truck windscreens • Boat and yacht glass protection • Farming machinery • Mining equipment, anti-dust effect • Train windows • Aviation glass and windscreens Independent studies show that a hydrophobic coating such as Vision Protect applied to a car or truck windshield improves visibility during rainy conditions by over 30%. Outcome from the research indicates a significant improvement in driver response time to road hazards of up to 25%. At a speed of 70 km/h this means you can stop up to 20 meters earlier than without Vision Protect.

**The Kit Contains:**

- One Wipe of KL40 surface preparation • Two Wipes of KG1010 (Nano Coating) • Instruction manual
- The Kit contains treatment for one car or truck windscreen.



# KEYBOND®

KEY BOND® UV Adhesive are the range of clear colorless liquid photopolymer GLASS ADHESIVES. KEY BOND UV Adhesives are low viscous, transparent, optically clear, solvent less 100% solid single component which is ecofriendly in nature. UV Adhesive in simple words is Glass glue, used to stick glass to glass, glass to metal and glass to other objects. KEY BOND® UV Adhesive is an ultraviolet curing adhesive for glass bonding.

UV Adhesive	Packaging
K-701-Glass to Glass	100ml & 250ml
K-702-Glass to Metal	100ml & 250ml
K-703-Glass Edge to Edge	100ml & 250ml
K-704-Glass to Ceramic/Wood	100ml & 250ml
K-705-(A-J) Colored Adhesive for Glass to Glass	100ml & 250ml
K-706-Glass to Inkjet Photo (Glass Highlighter)	100ml & 250ml
K-707-(A-N) Sparkled Adhesive for Glass to Glass	100ml & 250ml
K-708-Glass to Glass/ Metal	50ml

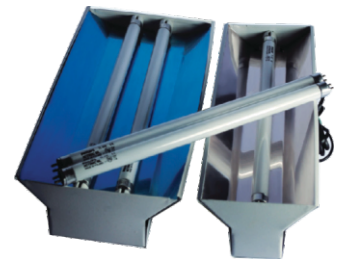


## UV Light

Ultraviolet light is part of our environment, found in sunlight; however we do not recommend using sunlight as a source of UV energy to cure any of our UV Adhesive products.

We suggest the use of UV Light which works at a wavelength of 320-400 nanometers. This lamp can help cure KEY BOND™ UV Adhesive in approximately 55-60 seconds. When using KEY BOND™ Products, an ultraviolet light curing lamp emitting long wavelength (UV-A) peaking at 320-400 nanometers must be used to cure the UV glue and obtain adhesion. The sun is a poor substitute for UV-A energy.

Picture	UV Light Typing -Volt	Watt
Single tube with fitting	220V	8W
Double tube with fitting	220V	16W
Round fitting	220V	125W
UV Tube	220V	8W
Round Bulb	220V	125W



UV Light

## Glass Lamination

### What is Laminated Glass with EVA Film?

Laminated Glass with EVA Film is much important one in the series of laminated glass in glass industry. The processing principle of EVA laminated glass is similar to most of the laminated glass. Furthermore, using EVA film to lamination glass does not require autoclave. All laminating processing will be finished and completed in one vacuum laminator. EVA Film for glass has excellent transparency. outstanding adhesion and aging-resistance (more than 20 years), can be used for architectural glass, decorative glass with fabric.

### KGLM01 Glass Lamination HeatBox

Sold over 42 LPG/CNG gas fired Glass Lamination Heat Box in India and still counting. This machine can laminate ordinary glass with rice paper, silk, cotton, Yoshiro paper, drawings, UV single-way n clairvoyance, dimming films or special films to make various art glasses and decorative glass. The machine is equipped without any autoclave and hot-press. It is simple and reliable in structure.

### Silent Features of Machine

Power saver, low cost, Maintenance free, Low production cost. Enviroment-friendly systems, Operated by LPG/CNG Gas, Easy installation



Glass Lamination HeatBox

Model	Outer Dimension	Glass Working size	No. Load Table	Working Temp	Type	Process	Heating Cycle	Power
KGLM01	11'x7'x6' LxWxH	10'x6' LxW	1	120 -140°C	LPG/CNG Gas Fired	Automatic	60-90 mins	3HP

# EVA Films

## EVA/PA Films For Glass Lamination

EVA stands for ethylene vinyl acetate, a copolymer resin used in the production of laminated glass as the interlayer sandwiched between two pieces of glass. The main function of the interlayer is to hold the two piece of glass together, thus making them safer and more secure. EVA film is translucent and has a light pattern on the surface before heating. After heating, it becomes completely transparent, offering good visibility. In the production of laminated glass with EVA interlayer, no autoclave, roller press, air bag, or vacuum rubber ring is required. As EVA interlayer can be handled under normal climatic conditions, no clean room with climatic control is required.

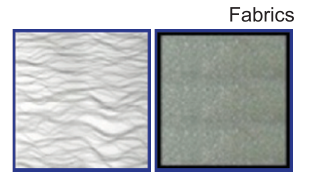
### Advantages of EVA film :

High tensile strength, Excellent transparency, Outstanding adhesion, UV protection, High wind resistance, Good temperature withstanding, Water proof, Humidity durable, Long-term reliable & Sound barrier.

PA film is one of new type EVA film which combines the characteristics of EVA & PVB. PA films are 91.5% Clear and are recommended for external use. PA films comes with a 15 year exterior use certificate.

### We can supply the following EVA/PA Films:

- Transparent Clear EVA Film
- Super Clear Outdoor (PA Film)
- Opec/Translusion Colored Film



Fabrics

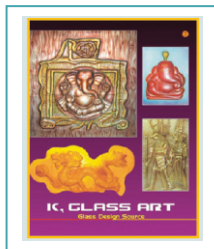
# K, Glass Art®

# Glass Design Source

K, Glass Art® Committee, an exclusive state agency of glass art circle in India. K, Glass Art® Committee is mainly responsible for the Communication of glass art techniques, the edition of glass art books, research and exhibition, and so on. This acclaimed series of 14 volumes from K, Glass Art® showcases outstanding collections of contemporary design by an array of top artists. The books art must-have sources of inspiration for crafters, artists, collectors, galleries, and design enthusiasts.



**Vol-1**  
Etching & Air Brush Design



**Vol-2**  
Glass Mural & Hot Fusion



**Vol-3**  
Acid Crystal & Opaque Color Panel



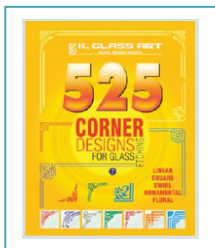
**Vol-4**  
345 Ultimate Mirror Design



**Vol-5**  
Office Door & Partition



**Vol-6**  
Ceiling & Railing Design



**Vol-7**  
536 Corner Design



**Vol-8**  
Door & Windows



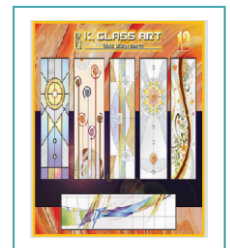
**Vol-9**  
Glass Temple & Glass Pillar Design



**Vol-10**  
Glass Furniture & Table



**Vol-11**  
Door, Window & Mirror



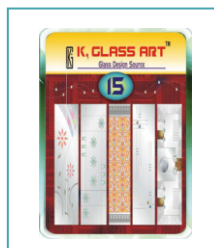
**Vol-12**  
Doors & Partition



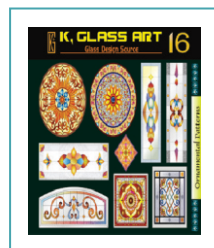
**Vol-13**  
Doors & Partition



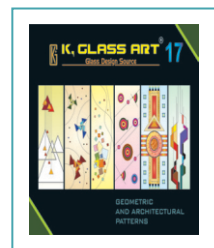
**Vol-14**  
Doors, Partition & Mirror



**Vol-15**  
Crystal Pasting Design



**Vol-16**  
Ornamental Patterns



**Vol-17**  
Geometric and Architectural Patterns



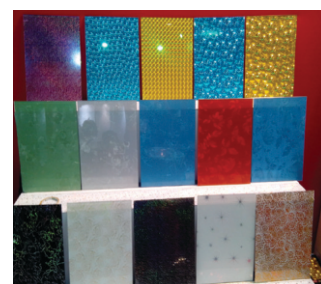
**Vol-18**  
Ultimate Mirror Designs

# HOT LAMINATOR

Model	FY850	FY1350
Diameter of laminating roll	1300mm	
Max. laming width	850mm	1350mm
Max. laming thickness	30mm	
Speed range	Adjustable, 0-7m/min	
Roller heating	Internal heating by infrared	
Temperature range	Adjustable, environmental - 60° C	
Warm up time	10 - 20min	
Power Consumption	0.8~1.0kw/h	
Laminating mode	Electromotive driven	
Pressure adjustable mode	Air cylinder lift up and low down automatically	
Rated input voltage	220V	
Net weight	220kg	350kg
Dimension L•W•H(mm)	1270•700•1200	1770•700•1200
Film supply:	Consumable supplied continuously on best price	



Hot Laminator Machine



Finished Products

# 2D/3D ENGRAVER FOR GLASS, METAL, CERAMIC

Model	FY1325	FY2035
Engraving Depth	From 1mm to 40mm	
Machine body	Whole cast Iron	
Working Dimension	1300mm•2200mm•230mm	1830mm•3048mm•230mm
Engraving Speed	40m/min	
Working Speed	0-40m/min	
Water cooled spindle Power	3.0kw, 380v	3.0kw, 380V
Voltage	220v50~60hz, 380v 50~60hz	
Rotation Rate	0.24000rpm	
Mechanical Precision	0.005mm	
Driver type	Using 86 series 450B stepper motors, double in Y axis. Other suppliers use 450A, that is weak than ours	
Type of guide ways	Taiwan HIWIN 25mm rectangular guide ways	
Transmission system	Taiwan ABBA double nuts Ball screw rod in Z axis. Rack gear in X & Y axis	
Blade diameter	1-8mm	
Control system	Weihong(NCSTDIO) or DSP(USB interface)	
Net Weight:	1800kg	2200kg

2D/3D Engraver Machine



Finished Products

# ECOMAGIC™ - GLASS PAINTS

## K BOND Specialized Glass Lacquer

Robust, non solvent, water based, glass lacquer with a voc level well below the 2005 Montreal Protocol Guidelines.

### COMMITMENT

ECOMAGIC™ is an abbreviation for eco-friendly; i.e. caring for the environment. Committed to pioneering innovative coating technologies to benet the customers and the wider environment.



### HIGH QUALITY

Clearly, quality is another important consideration. A rigorous testing program ensures that all products oered to the market have been thoroughly tested before commercial release. All ECOMAGIC™ products are guaranteed to perform well within the company's product specifications. ECOMAGIC™ has production facility which is extremely exible and can cater for long production runs as well as specialized batches to meet specic customer requirements.

### ADVANTAGE OF ECOMAGIC™ GLASS LACQUER

- VOC compliant • Non-flammable • Excellent adhesion • Enviornment friendly • Lead and chromate free
- Cost saving in paint and labor • Easy to apply and quick drying • Can be sprayed electro-statically • No aromatic hydrocarbon solvents • Water based 100% acrylic products • Great opacity and excellent coverage • Durable and excellent application properties • In-house laboratory testing for quality control • Acceptable for production line coating application

## Showcase

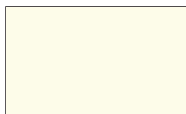


## Shades

Dark Brown



Ivory



Baby Pink



Cascade Green



Black



Golden Yellow



Metallic Gold



Metallic Silver



Sky Blue



Dark Grey



Signal Red



Pure White



### Contact information

Telefax: +91 22 42642328  
Mob: +91 9324 223891 • Email: info@kbond.in  
Website: www.kbond.in

Scan for Contact

