



**IATF CERTIFIED COMPANY**

## **MOST TRUSTED GLOBAL PARTNER FOR PREMIUM AND TAILORED ALUMINIUM SOLUTIONS**

We at Global Aluminium Pvt. Ltd. are a **28+ year-old company** with **two advanced manufacturing plants** (**Unit 1** – 9 acres and **Unit 2** – 41 acres, located near Hyderabad), equipped with **10 extrusion presses** and comprehensive **in-house anodizing, powder coating, and fabrication** facilities.

We provide **end-to-end aluminium solutions under one roof** — driven by innovation, empowering customers in their product development journey, building long-term partnerships, and delivering excellence in every solution.

**“ Shaping Aluminium. Empowering Innovation. Delivering Excellence.”**

- Annual Production Capacity of 50,000+ MT
- 50,000 Dies for 15,000 Different Profiles
- Capability to produce complex and large-size profiles
- Advanced CNC machining, fabrication, and assembly support
- In-house anodizing and powder coating facilities
- AI-based quality monitoring and process optimization
- Continuous R&D for lightweight and high-strength applications

**EXPANDING WITH A 12/14-INCH EXTRUSION PRESS BY MARCH 2026**





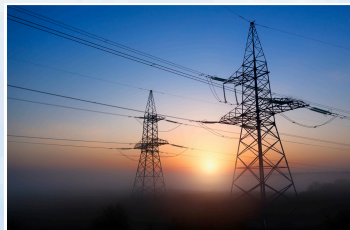
# OUR TOP SEGMENTS

## SERVING DIVERSE INDUSTRIES WITH PRECISION

Global Aluminium's products power progress across a wide range of industries — combining strength, design flexibility, and flawless finish.



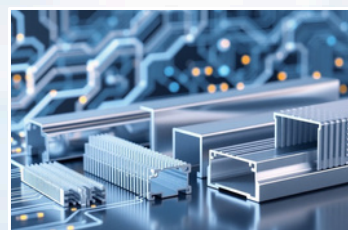
**BUILDING & CONSTRUCTION**



**TRANSMISSION & DISTRIBUTION**



**RENEWABLE ENERGY**



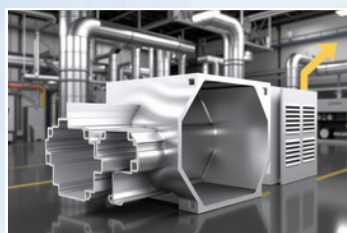
**ELECTRICAL & ELECTRONICS**



**AUTOMATION INDUSTRY**



**AUTOMOBILE & AERONAUTICS**



**AIR HANDLING UNITS**



**CUSTOM MADE**

## OUR EDGE

### Weight Savings & Cost Savings

- Cost-effective sourcing solutions, backed by partnership with Vedanta Aluminium for seamless alloy development.

### Comprehensive Fabrication Services

- Powder coating, anodizing, or mill finish.
- Machining, drilling, cutting, stamping, welding, bending, and fabrication — all tailored to your project needs.

### On-Time Delivery

- State-of-the-art facilities with the capacity to produce and deliver across India on schedule.

### Custom Extrusion Capabilities

- Complete tool & die shops, in-house foundries, surface finishing & fabrication for complex, specification-driven projects.

## MANUFACTURER OF HIGH-QUALITY ALUMINIUM EXTRUSIONS IN INDIA



## AUTOMOTIVE EXTRUSIONS — DRIVING THE FUTURE OF MOBILITY

As an IATF 16949 Certified Company, Global Aluminium delivers high-precision aluminium extrusions for critical automotive applications, ensuring lightweight strength, durability, and superior finish.

### APPLICATIONS INCLUDE:

Roof Rails & Support Pillars | Front & Rear Headers | Frame Rails | A/B Pillars | Rocker Reinforcements | Crash Management Systems | Strut Tower Braces | Sub Frames | IP Beams | Side Door Intrusion Beams | Beltline Reinforcements | Roof Racks | Control Arms | Driveshafts | Electronics Housings **and more.**

### OUR COMPETITIVE EDGE:

- Custom alloys: 6000, 7000, 3000, 2000, and 5000 series
- In-house casting for tailor-made alloy requirements
- Advanced CNC machining, fabrication & assembly
- Surface finishing: anodizing & powder coating
- Proven reliability for OEMs and Tier-1 suppliers



**IATF CERTIFIED COMPANY**





## ARCHITECTURE & BUILDING SOLUTION:

TRANSFORMING SPACES WITH PRECISION ALUMINIUM PROFILE

### PREMIUM ALUMINIUM SOLUTIONS FOR MODERN ARCHITECTURAL DESIGNS:

- Sleek, durable, and sustainable profiles for facades, windows & doors
- Engineered for strength, aesthetics & weather resistance
- Wide range of surface finishes: anodized powder coated.
- Custom extrusions tailored for façade systems, curtain walls, and glazing
- Perfect balance of design flexibility and structural integrity
- Supporting smart, green, and energy-efficient buildings

## SHAPING TOMORROW'S SKYLINES WITH ALUMINIUM PRECISION

We also believe in building a better tomorrow. **Our focus on sustainability, renewable energy, and recycling** reflects our responsibility towards the environment and the communities we serve.

OUR EXPORTS:           

## CONTACT US

# WELCOME TO THE GLOBAL FAMILY!

## Building Profiles. Building Trust.



[www.globalaluminium.com](http://www.globalaluminium.com)



[info@globalaluminium.com](mailto:info@globalaluminium.com)

**OPERATING FACILITIES :** HYDERABAD | COIMBATORE | BENGALURU | MUMBAI | DELHI | PUNE |  
AHMEDABAD | UNITED STATES (USA) | AUSTRALIA | EUROPE

