

# Every Professional's Preferred Sealant Choice.



Scan QR code for digital brochure

24CC0956 FEVBRC\_APR



## High performance sealants



## About Pidilite

Pidilite is a consumer-centric company committed to quality and innovation. For decades, we have been pioneering products for small to large applications at home and industry, which have forged strong bonds with people from all walks of life.

**2<sup>475</sup>**  
Grew from 2 to 475  
brands in just 45 years

7,600+ employees

**2 million**  
Strong pan-India dealer  
& distributor network

10+ manufacturing units

**17** overseas subsidiaries  
with manufacturing  
facilities in 8 countries

Among top **45**  
listed companies in India  
(on market cap)



Market leader in adhesives. Famous for its superior quality, & iconic advertising. Building bonds for more than 60 years.

**Araldite®**

Epoxy Adhesive  
made as per  
evolving needs of  
users. Comes with  
the trusted  
performance of  
Pidilite / Fevicol.



Trusted performance for all screed, underlayment and tiling applications. A proven single source solution for commercial flooring and walling applications.



Proven structural waterproofing and protection systems, delivering protection and performance in the harshest of environments.



High performance  
sealant range.  
Best in class  
quality at  
affordable price.

## NOTES

This image shows a single sheet of white paper with horizontal blue ruling lines. The lines are evenly spaced and run across the width of the page. There are no margins, text, or other markings on the paper.



# FEVISEAL PU FOAM

Feviseal PU Foam is 1K expanding foam ideal for gap filling applications in construction.

- SINGLE COMPONENT
- HIGH FOAMING SPEED
- MULTISUBSTRATE ADHESION
- PAINTABLE

Gap Filling: Construction gap, window/door frames, Electrical outlet insulation.

Packsize: 750 ml      Colour: White

Tack Free Time (min) at 25 Deg C, 50-60% RH: 6-15

Application Temperature Range (Deg C): 5-40



## INDEX

01 Feviseal Range	02 Feviseal Application Areas	03 Gap Filling Application Procedure
04 Bonding Application Procedure	05 Types of Sealants	07 Feviseal GP
08 Feviseal GP PRO	09 Feviseal Netural Pro	10 Feviseal Weatherproof PRO
11 Feviseal Multipurpose	12 Feviseal Bathroom & Kitchen	13 Fevicol Powerlocck
14 Fevicol Nailfree Ultra	15 Feviseal PU Foam	



# Every Professional's Preferred Sealant Choice.



## FEVICOL NAILFREE ULTRA

High Strength quick grab adhesive sealant which bonds multiple substrates such as mirror, bathroom fittings, ACP, metal, tile etc.

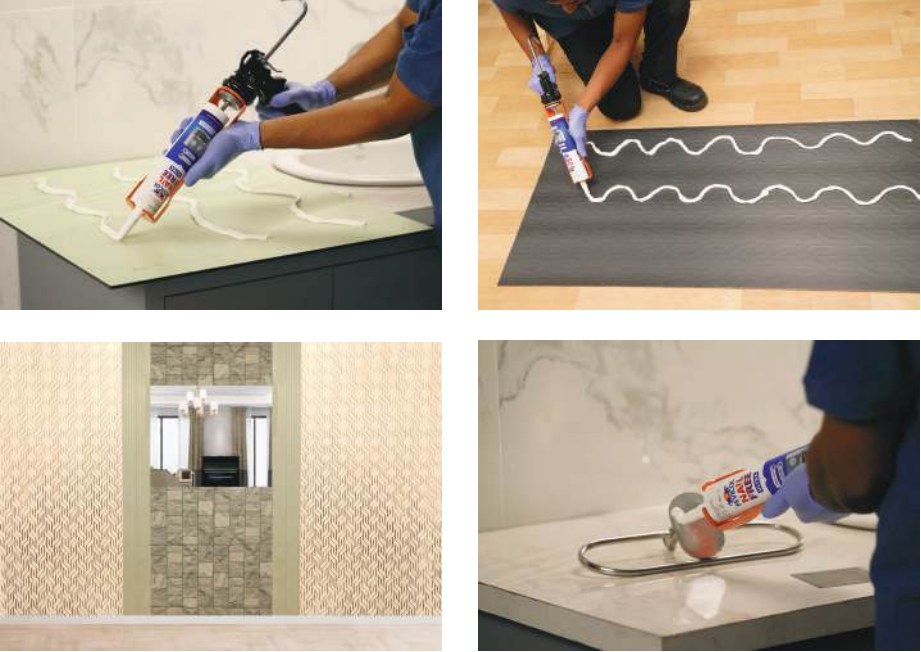
- STRONG GRAB
- MULTISUBSTRATE ADHESION
- ENVIRONMENT FRIENDLY
- UV & WEATHER RESISTANT

Bonding: Can be used for interior & exterior fit-outs like mounting mirrors, glass, decorating ply with stones, marbles, wall tiles, uPVC & ACP panels. It also works on wet surfaces.

Packsize: 435 gm      Colour: White

Skin Formation Time (min) at 25 Deg C, 50-60% RH: 8-12

Application Temperature Range (Deg C): 5-40





# FEVICOL POWERLOCCK

Multipurpose construction rubber based adhesive sealant used for bonding ACP sheets, mirror, wall panels etc.

**STRONG  
GRAB**

**MULTISUBSTRATE  
ADHESION**

**EXTERIOR AND  
INTERIOR  
APPLICATIONS**

**WATER &  
WEATHER  
RESISTANT**

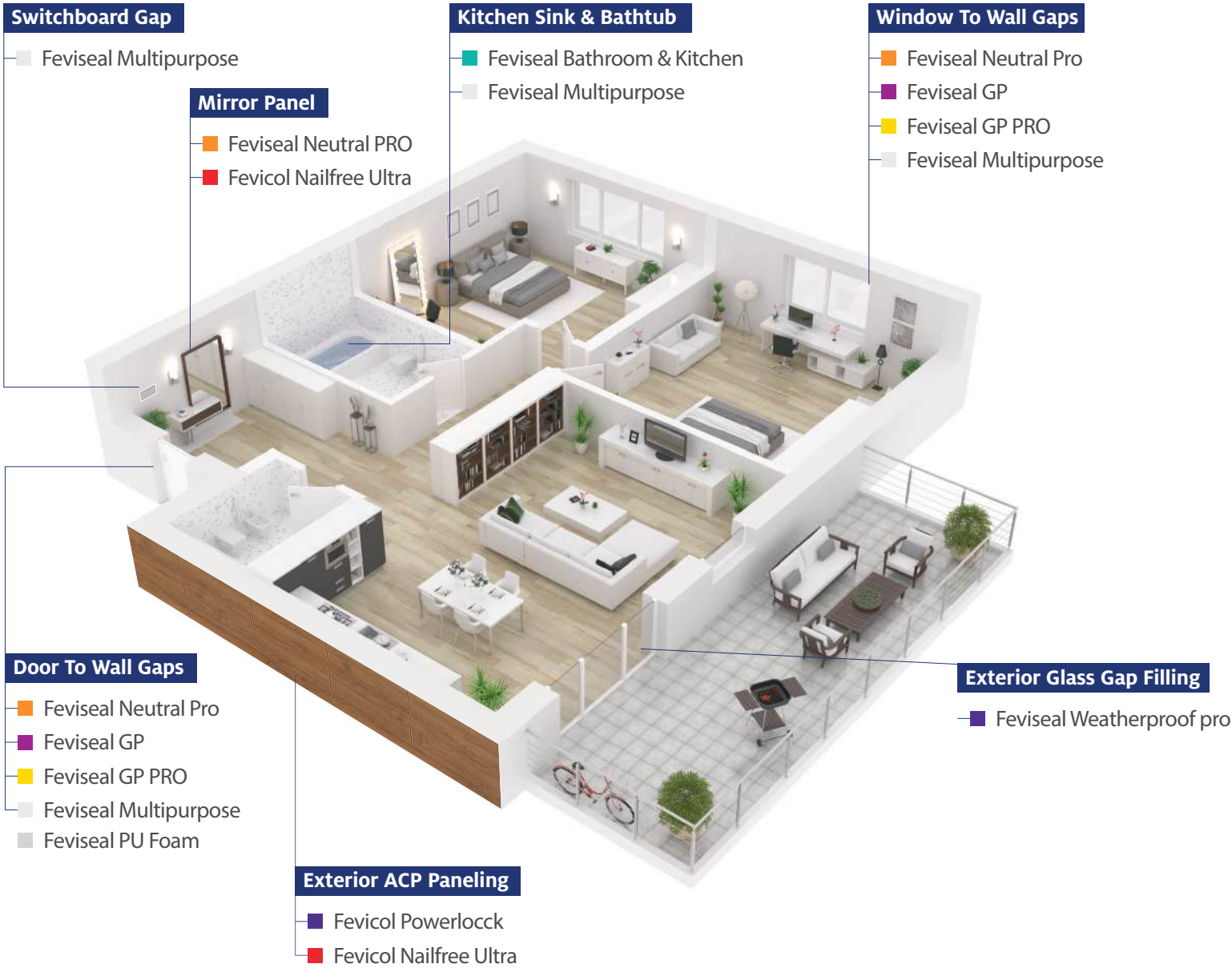
For bonding ACP to plywood, aluminium channel or masonry surface. For bonding wide range of substrates including wood, gypsum, aluminium, galvanized iron, steel, fibrous cement sheet wall & floor panels.

\*Not meant for gap filling.

**Packsize:** 320 gm      **Colour:** Off-White



# Feviseal Application Areas





## HOW TO APPLY

### Gap Filling Application Procedure



1 Clean & Dry surfaces



2 Cut the bottle top



3 Cut the nozzle in 45 degree equal to the gap width



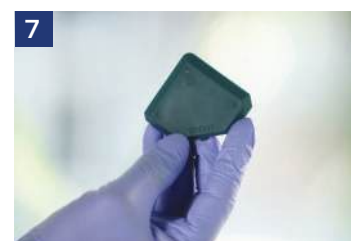
4 Load the cartridge into the gun



5 Fix the masking tape on both sides



6 Fill the sealant into the gap



7 Smoothen sealant bead



8 Remove masking tape before drying



9 Final application

#### FOR BONDING:

- Apply in vertical beads
- Give 24 hours support



### FEVISEAL BATHROOM & KITCHEN

Acrylic sealant used for sanitary gap filing applications.

GLOSSY  
WHITE &  
SMOOTH  
FINISH

EASY TO  
APPLY  
& PAINT

DOES NOT  
PICK UP  
DIRT

ANTI-FUNGAL  
ANTI-ALGAE

Gap Filling: For glass partitions, window/door frames, kitchen sanitary ware, wash basins, bath tubs etc.

Packsize: 420gm (280 ml)

Colour: Glossy White

Skin Formation Time (min) at 25 Deg C, 50-60% RH: 8-12

Application Temperature Range (Deg C): 5-40





## FEVISEAL MULTIPURPOSE

Acrylic sealant used for multipurpose gap filing applications.

**SMOOTH  
PAINTABLE FINISH**

**EASY TO APPLY  
AND PAINT**

**DOES NOT  
PICK UP DIRT**

**ANTI-FUNGAL  
ANTI-ALGAE**

**Gap Filling:** For glass partitions, window/door frames, kitchen sanitary ware.

**Packsize:** 280 ml

**Colour:** Black, Clear, White

**Skin Formation Time (min) at 25 Deg C, 50-60% RH:** 8-12

**Application Temperature Range (Deg C):** 5-40



## HOW TO APPLY

## Bonding Application Procedure



Clean & Dry surfaces



Use V-cut nozzle only



Load cartridge into the gun



Apply in zig zag pattern



Bond substrates & provide support

\*Same process can be followed for Feviseal Neutral Pro and Feviseal Weatherproof Pro bonding applications. Double sided tape is recommended for heavy substrates.


# Types of Sealants

## Gap Filling

Interior gap filling applications includes door and window gaps, uPVC frame to wall gaps, glass partition gaps, sanitary gaps, electrical gaps etc. Exterior gap filling application includes construction joint gaps, ACP/HPL sheet gaps, glass to glass gaps etc.

## Adhesion

Bonding applications includes mirror to ply/ tile/marble bonding, lacquered glass, ACP to Aluminium channel, louver, charcoal sheet bonding etc.

Gap Filling	Adhesion	Gap + Adhesion
<div></div> <div>Acrylic      PU Foam</div>	<div></div> <div>Hybrid      Rubber</div>	<div></div> <div>Acetoxy  Neutral</div>



# FEVISEAL WEATHERPROOF PRO

Neutral cure weather sealant used for exterior gap filing applications and can withstand joint movement upto +-20%.

EXCELLENT WEATHERABILITY

EXTERIOR AND INTERIOR APPLICATIONS

UV RESISTANT

ISO 11600 CERTIFIED

**Gap Filling:** Most exterior gap filling applications including Glass partitions, Al/Steel/Non-oily Wood, Al/Wood window/door frames and sanitary joints.

**Bonding:** Can be used for bonding Glass, Mirror, Aluminium, Steel, Concrete, Stone, Marble, Brick, Ceramics, Painted Surfaces, PVC

**Packsize:** 280 ml / 600 ml Sausage      **Colour:** Black, Clear, White

**Skin Formation Time (min) at 25 Deg C, 50-60% RH:** 8-12, 20-30

**Application Temperature Range (Deg C):** 0-50







# FEVISEAL NEUTRAL PRO

Multipurpose neutral cure silicone sealant for flexible panel bonding and gap filing applications.

- GENERAL INTERIOR  
GAP SEALING
- NO ACID  
RELEASE
- ANTI-  
FUNGAL
- UV  
RESISTANT

**Gap Filling:** Most interior gap filling applications including Glass partitions, Al/Steel/Non-oily Wood, Al/Wood window/door frames and sanitary joints.

**Bonding:** Can be used for bonding Glass, Mirror, Aluminium, Steel, Concrete, Stone, Marble, Brick, Ceramics, Painted Surfaces, PVC.

**Packsize:** 280 ml      **Colour:** Black, Clear, White

**Skin Formation Time (min) at 25 Deg C, 50-60% RH:** 8-12

**Application Temperature Range (Deg C):** 0-50



# Types of Sealants

## Gap Filling



Towel Rack



Door



## Adhesion



ACP facade



Mirror bonding



## Gap filling + Adhesion



Bathroom



Ceiling





## FEVISEAL GP

Economy grade acetoxy-cure silicone sealant

**EXCELLENT CLARITY** | **FAST CURING** | **CONVENIENT TOOLING** | **USED FOR GAP-FILING**

**Gap Filling:** Most interior gap filling applications including Glass partitions, Al/Steel/Non-oily Wood, Al/Wood window/door frames and sanitary joints.

**Bonding:** Can be used for bonding between glass, metal, tiles and wood.

**Packsize:** 260 ml **Colour:** Black, Clear, White

**Skin Formation Time (min) at 25 Deg C, 50-60% RH:** 5-8

**Application Temperature Range (Deg C):** 0-45



## FEVISEAL GP PRO

Premium grade acetoxy-cure silicone sealant.

**FAST CURING** | **CONVENIENT TOOLING** | **ANTI-FUNGAL** | **LOW BOC**

**Gap Filling:** Gap-filing applications such as glass partition, Al/Steel/Non-Oily Wood/Window/door frames and sanitary joints.

**Bonding:** Can be used for bonding glass, metal, tiles and wood.

**Packsize:** 280 ml **Colour:** Black, Clear, White

**Skin Formation Time (min) at 25 Deg C, 50-60% RH:** 8-12

**Application Temperature Range (Deg C):** 0-50

