

# Shaping Future of *Façades*



1200x3000x5mm

  
Porcelain by Caesarstone Ltd.

# Contents

Façade Collection	04
About Us	05
Why Porcelain Slabs For Façade?	06
Architectural Representation	08
Features	19
Facade Systems	20
Technical Specification	22
Project Gallery	24





**Architecture is more than structures.**  
It is about how a building breathes, how it speaks,  
and how it endures.

The façade is the skin of architecture - the defining  
element that transforms walls into expressions and  
silhouettes into landmarks.

The Lioli Façade Collection is created for visionaries  
who shape skylines and craft experiences. Each  
porcelain slab is a fusion of art and engineering:  
resilient against time, weather, and fire, yet graceful  
in its textures and tones.

From minimal modernism to timeless, stone-in-  
spired designs, these surfaces empower architects  
to sculpt bold identities while ensuring performance  
that lasts for generations.

Because a façade is not just decoration - **it is the  
true face of architecture.**

*Façade*  
Collection

# About Us

Lioli Porcelain by Caesarstone Ltd. is a pioneer in  
manufacturing Asia's largest porcelain slabs,  
measuring 1600x3200mm. Based in Morbi, India,  
we are a leading name in the porcelain tile industry,  
known for our state-of-the-art technology and  
exceptional craftsmanship.

As a proud part of Caesarstone, the global leader in  
engineered quartz surfaces, we merge our expertise  
in large-format slab production with Caesarstone's  
legacy of excellence. With over a decade of redefin-  
ing interior décor, we continue to set benchmarks  
in quality, innovation, and sustainability.



# Why *Porcelain* Slabs For Façade?

Once installed, porcelain slabs bring unmatched performance and timeless elegance to building facades. Their unique advantages make them a superior choice for architects, developers, and property owners alike:

## **Longevity :**

Engineered to endure, porcelain slabs can withstand years of exposure to weather, UV radiation, and daily wear - without losing their integrity.

## **Fade Resistance :**

Colors remain vivid and true over time, preserving the façade's aesthetic appeal without the need for frequent repainting or touch-ups.

## **Low Maintenance & Cost Savings :**

Easy to clean and requiring minimal upkeep, porcelain slabs significantly reduce long-term maintenance expenses compared to other materials.



## **Enhanced Property Value :**

A beautifully designed façade clad in porcelain instantly elevates a building's stature, adding both visual appeal and long-term value.

## **Weather Resistance :**

Resistant to moisture, frost, and temperature fluctuations, porcelain slabs remain stable and intact even in extreme climates.

## **Fire Resistance :**

With inherent fire-resistant properties, porcelain slabs add an extra layer of safety and protection to the building envelope.



## **Stain Resistance :**

The non-porous surface prevents staining, keeping the façade clean and fresh - even in polluted or high-exposure environments.

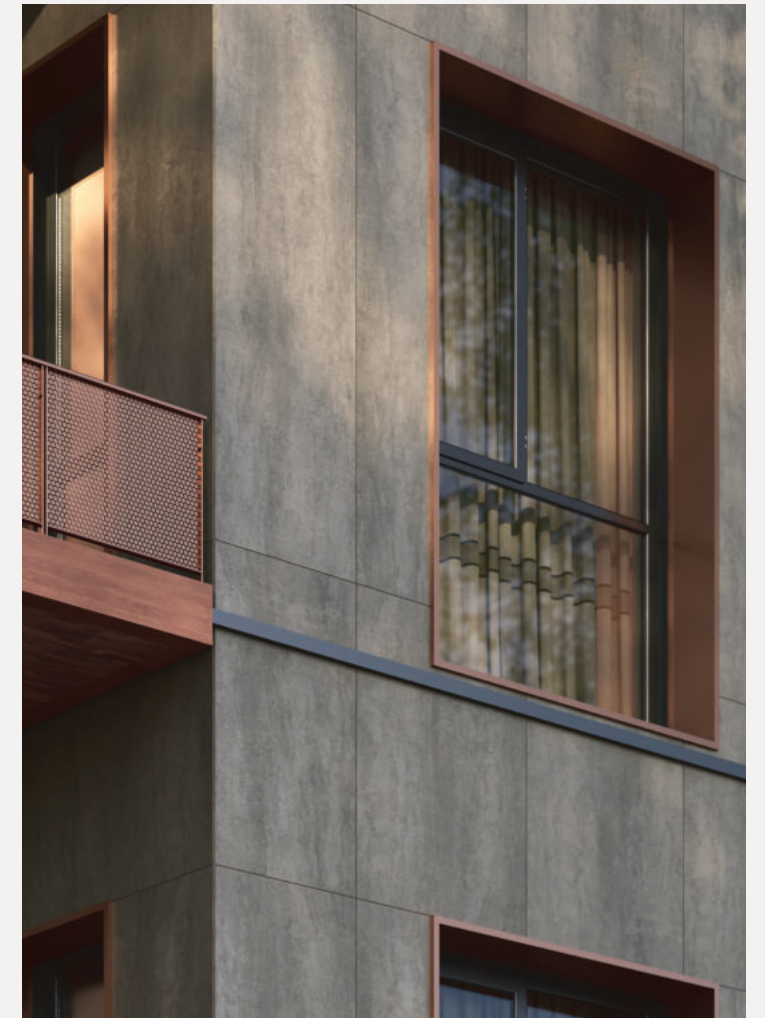
With proper installation and periodic care, porcelain slab facades not only protect but also define architecture combining durability, safety, and beauty for generations.



1200x3000x5mm

## Gravel Grigia

( Structure )



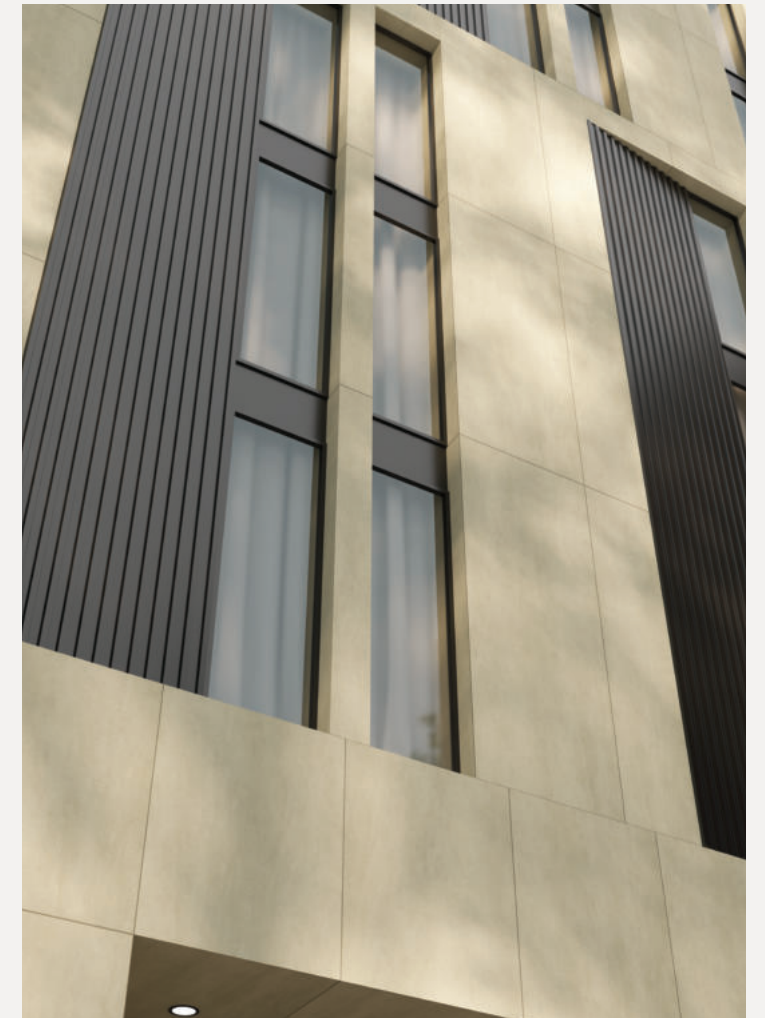
Subtle yet striking - Gravel Grigia captures the quiet confidence of stone and translates it into contemporary architecture. Its textured grey surface adds depth and dignity, turning every façade into a canvas of sophistication.



1200x3000x5mm

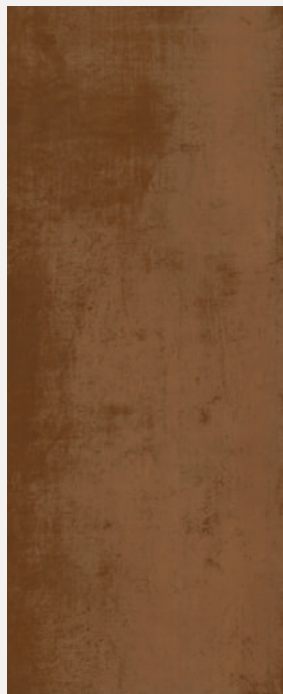
## Gravel Perla

( Structure )



Designed for modern architecture, this surface brings a refined balance of texture and elegance. Its neutral tones complement both contemporary and timeless designs, offering versatility across a wide range of applications. Perfect for creating sleek façades with a natural yet sophisticated presence.





**Ferro Corten**  
1200x3000x5mm (Rustic Matt)



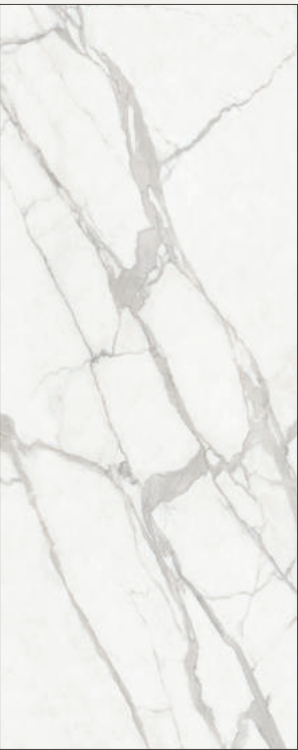
**Ferro Steel**  
1200x3000x5mm (Rustic Matt)



**Fossil Cream**  
1200x3000x5mm (Rustic Matt)



**Gravel Perla**  
1200x3000x5mm (Structure)



**Marble Statuario**  
1200x3000x5mm (Rustic Matt)



**Marble Travertino**  
1200x3000x5mm (Rustic Matt)



**Gravel Anthracite**  
1200x3000x5mm (Structure)



**Gravel Crema**  
1200x3000x5mm (Structure)



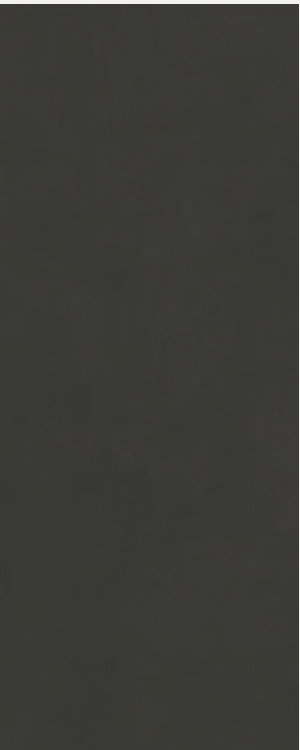
**Gravel Grigia**  
1200x3000x5mm (Structure)



**Mese Oak Wood**  
1200x3000x5mm (Rustic Matt)



**Pietra Limestone**  
1200x3000x5mm (Rustic Matt)

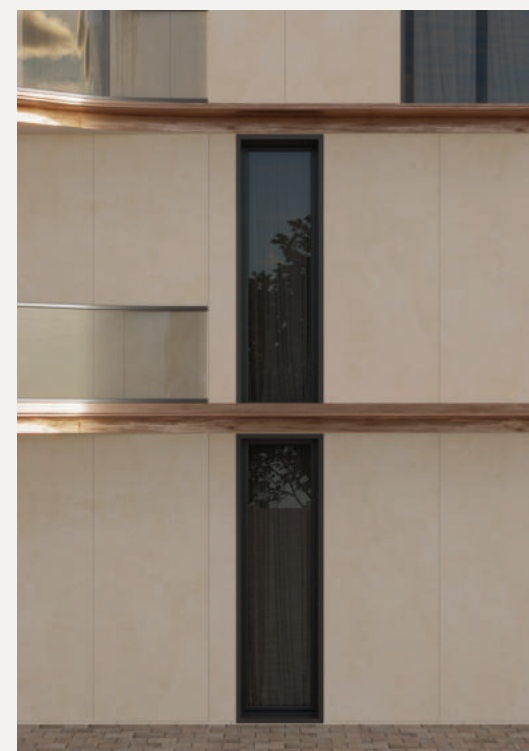


**Roccia Anthracite**  
1200x3000x5mm (Rustic Matt)

1200x3000x5mm

## Roccia Crema

( Rustic Matt )



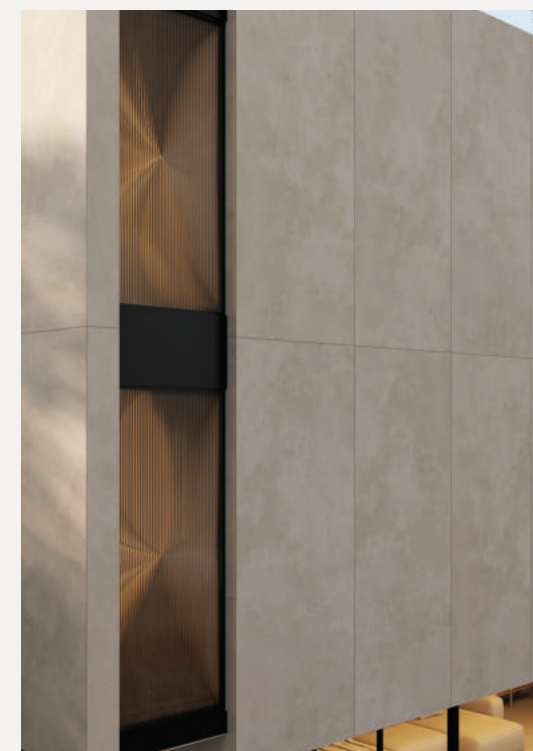
A warm and inviting finish that blends naturally into architectural design. Its understated elegance enhances façades with a sense of balance and timeless sophistication.



1200x3000x5mm

## Roccia Gris

( Rustic Matt )



A subtle and timeless surface that enhances architectural expression. Its natural tones integrate seamlessly with both modern and classic design, offering a refined backdrop for creative spaces.





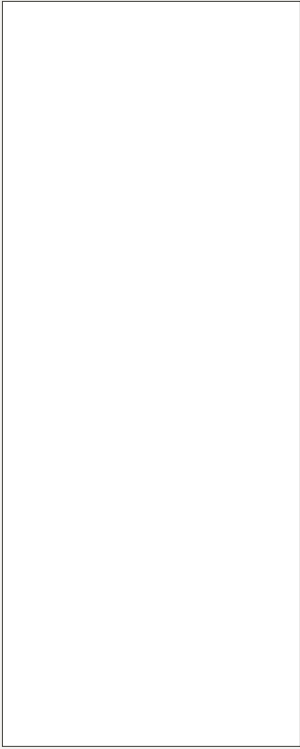
**Roccia Brown**  
1200x3000x5mm (Rustic Matt)



**Roccia Crema**  
1200x3000x5mm (Rustic Matt)



**Roccia Gris**  
1200x3000x5mm (Rustic Matt)



**Solid Bianco**  
1200x3000x5mm (Rustic Matt)



**Solid Noir**  
1200x3000x5mm (Rustic Matt)



**Terracotta**  
1200x3000x5mm (Rustic Matt)

Features



**High Heat and Frost Resistance**  
Lioli surface is equipped with advanced technology to accommodate various climate conditions. It maintains its durability against sudden changes in heat and frost.



**High Scratch Resistance**  
Lioli has a smooth surface on which dirt does not accumulate. If required it can be cleaned with water and known cleaning agents.



**High Stain Resistance**  
Non-porous surface prevents stains from food, beverages, or chemicals and cleans easily.



**High Abrasion Resistance**  
Built to endure heavy wear, the surface maintains its texture and shine over time.



**High UV & Weather Resistance**  
Resistant to sunlight and weather, the surface retains its colour and beauty for years.



**Low Water Absorption (Near Zero)**  
Near-zero water absorption prevents seepage, ensuring strength, hygiene, and durability.



**Everlasting**  
Durable and timeless, the surface maintains its strength and beauty for years.



**Hygienic**  
Protects both outdoor and indoor, even in poorly lit environment. Hygienic, resistant to bacteria, mould and fungus.



**Eco-friendly**  
Produced with an environmentally-friendly technology, Compared to the traditional ceramic production process, its gas and dust emission is 20 times, its CO2 emission is 1000 times less.



**Cutting**  
It can be cut with standard glass, ceramic cutters and computer controlled automatic cutting machines in the required dimensions.



**Drilling**  
Lioli can be drilled with glass drills as well as with other automatic drilling devices.



**Weight**  
A 5mm thick lioli slab weighs 11.5 kg/sqm..



**High Scratch Resistance**  
Lioli has surface hardness of 7 mohs scale.



**Non Flammable (Flame Resistant)**  
Lioli is totally fire resistant and non flammable



**Chemical Resistance**  
Lioli is resistant to chemicals (acids and bases) due to its porcelain ceramic structure

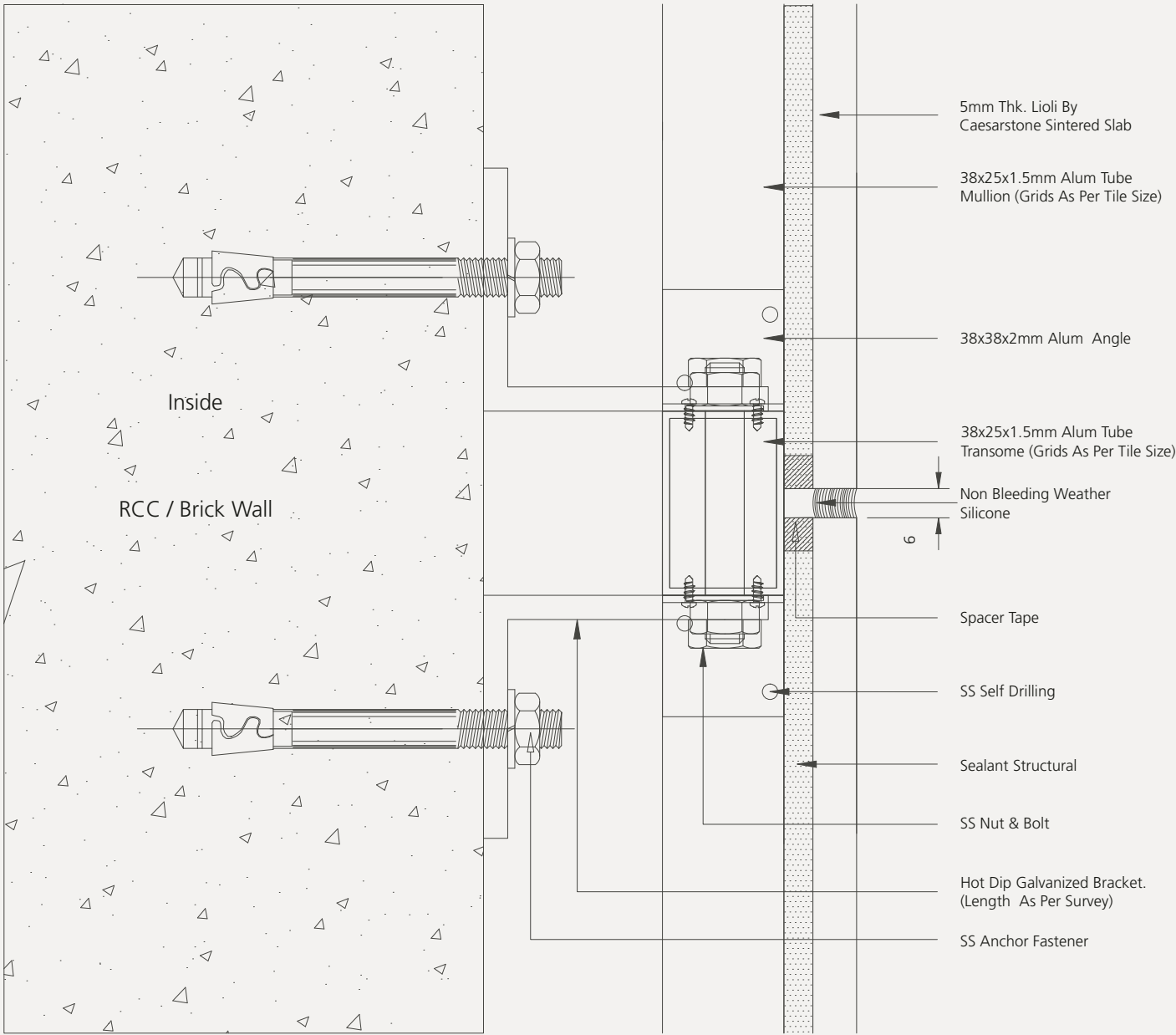


**Anti-graffiti**  
Easy to wipe and clean pollutants like crayon, graffiti, permanent marker, board marker.



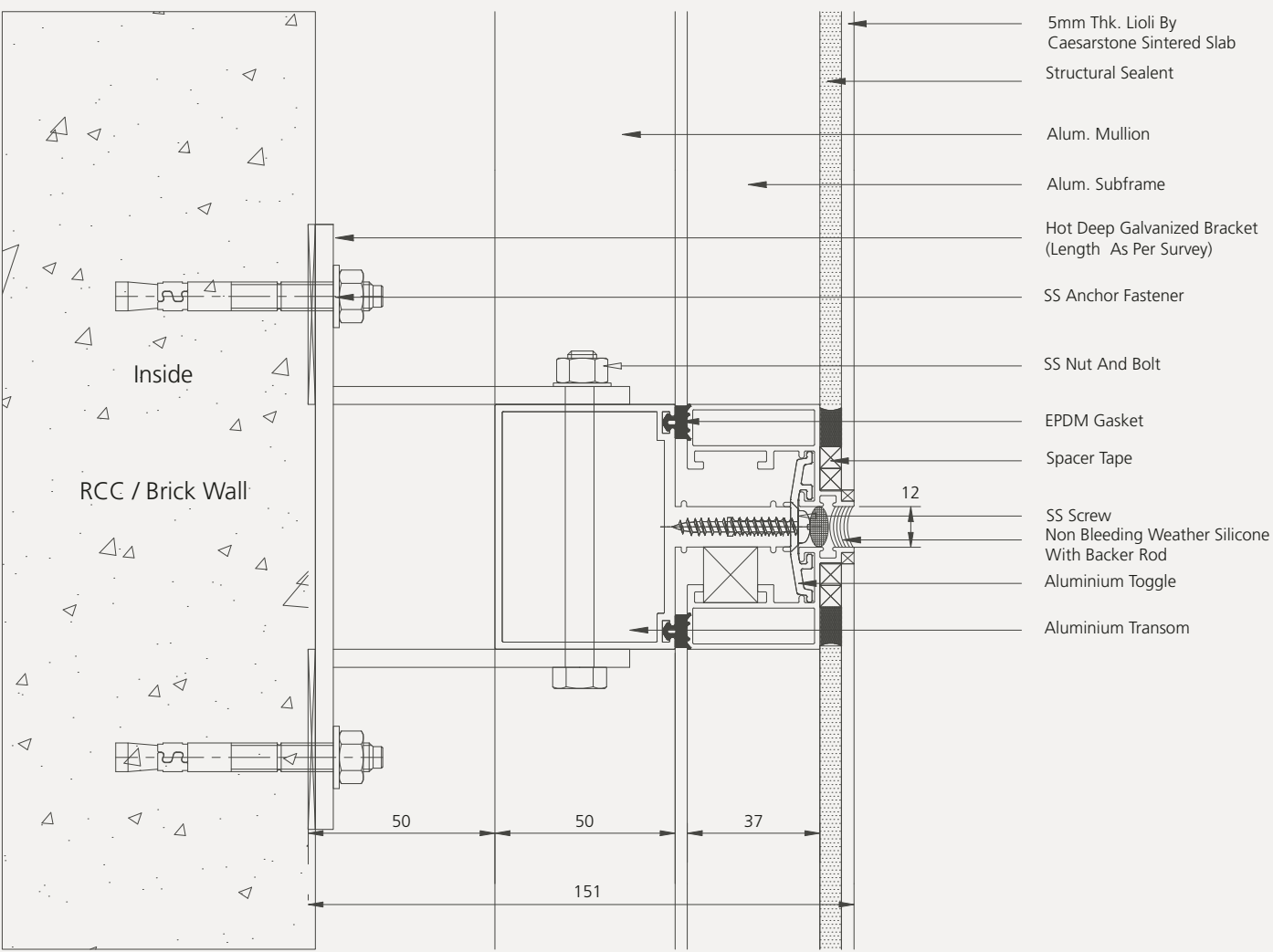
# Facade System 1 Stick System

Outside



# Facade System 2 Semi Unitized System

Outside



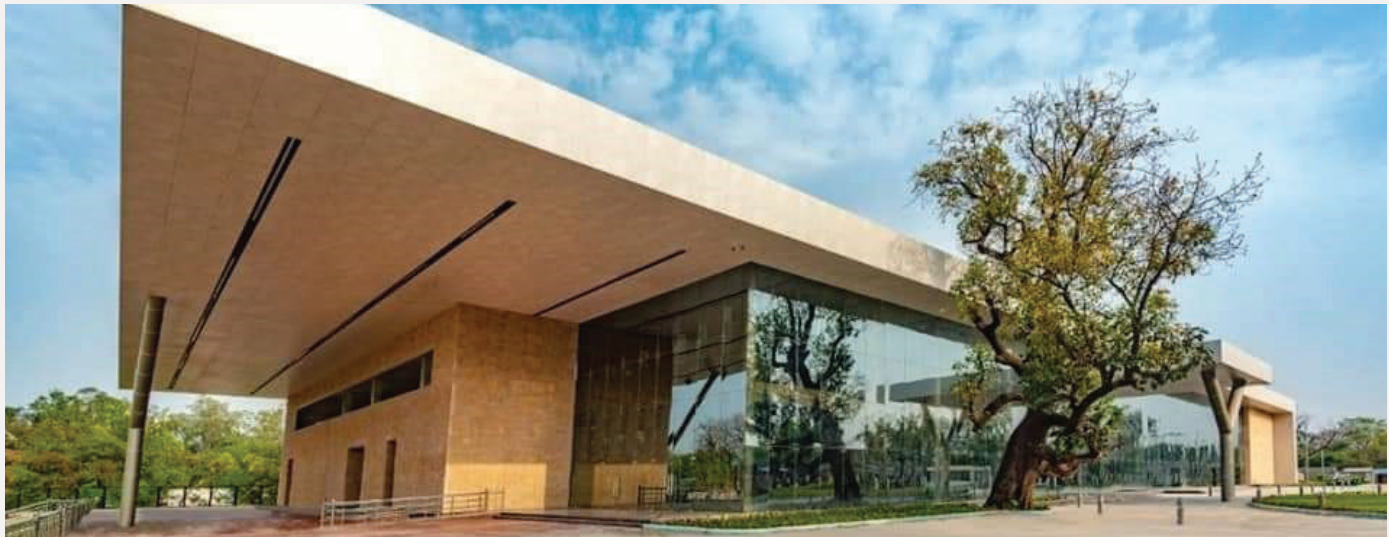


Technical  
Specification

Dimension & Surface Quality	Standard as Per ISO 13006 EN14411 Gr.Bla	Method of Testing	Test Result
Deviation In Length and Width	±0.5 %	ISO 10545-2	±0.06 %
Deviation in thickness	±0.5 %	ISO 10545-2	±3.5 %
Straightness in side	±0.5 %	ISO 10545-2	±0.06 %
Rectangularity	±0.5 %	ISO 10545-2	±0.06 %
Surface flatness	±0.5 %	ISO 10545-2	±0.08 %
Color difference	Unaltered	ISO 10545-2	No change
Structural Properties			
Water absorption	≤0.5 %	ISO 10545-3	≤0.1 %
Apparent density	> 2.0 g/cc	DIN 51082	> 2.312 g/cc
Surface Mechanical Properties			
Surface abrasion	As per mfg.	ISO 10545-7	Class-5
MOH’S hardness	As per mfg.	EN 101	>7
Thermo Hygrometric Properties			
Frost resistance	No damage	ISO 10545-12	No damage
Thermal shock resistance	No damage	ISO 10545-9	No damage
Moisture expansion	Nil	ISO 10545-10	Nil

Linear Thermal expansion(COE)	Max. 9.0 x 10-6	ISO 10545-8	3.2x 10 <sup>-6</sup>
Crazing resistance	As per mfg.	ISO 10545-11	> 10 cycle
Chemical Properties			
Chemical resistance	No damage	ISO 10545-13	
Cleaning products			GA
Pool salts			GA
Weak concentration			GLA
High concentration			GHA
Release of lead and cadmium	As per mfg.	ISO-10545-15	No release
Stain resistance	Resistant	ISO 10545-14	Class-4
Safety Properties			
Fire resistance	As per mfg.	EN 13501	Class A2,s1,d0
Slip resistance	> 0.40	ISO-10545-17	>0.43
Massive Mechanical Property			
Breaking strength (N)	>700	ISO-10545-4	1240
Modulus of Rupture (N/mm2)	>40	ISO-10545-4	77
Coefficient of Restitution	>0.6	ISO-10545-4	0.86









**Lioli Ceramica Pvt. Ltd.**

NH 8/A, Bharat Nagar, Village Morbi, Gujarat - 363642, INDIA  
+91 95123 00680 1 [info@lioliceramica.com](mailto:info@lioliceramica.com)  
[www.lioliceramica.com](http://www.lioliceramica.com)