



PRODUCT OVERVIEW

LINEAR PROFILES

10 YEARS

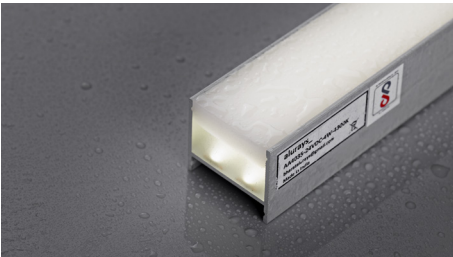
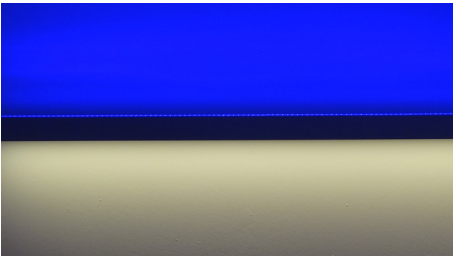
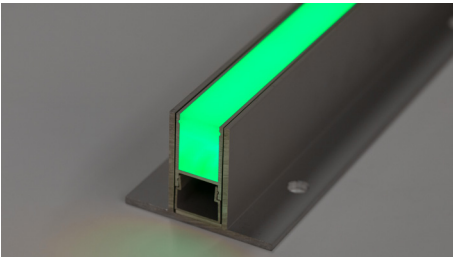
alurays_
LIGHTING TECHNOLOGY

Alurays Lighting Technology is a fully focused provider of tailor-made lighting solutions by offering a comprehensive portfolio of Linear LED systems for indoor and outdoor applications. We develop and produce long lasting maintenance-free linear LED-based aluminum lighting products.

We manufacture the LED profiles with correlated colour temperatures ranging from 2700K - 6000K, as well as other monochromatic colours such as yellow, green, blue and red other than that 2,3,4 channel version with RGB or RGBW.

Since our inception in 2015, we have been working closely with lighting designers and architects to bring lighting concepts to reality. Each project is unique and so is our solution! Customisation is key for us, which helps us achieve a solution which is never seen before!

Our R&D team works with utmost attention to constantly evolve and come up with solutions as per the requirements of our professional partners for each project. As a company our goal constantly remains to design light with passion, hence we invest in resources to produce **#DREAMLIGHT** projects.



All Photographs in this document are © Copyright Alurays Lighting Technology India Private Limited and © Copyright Alurays Lighting Technology GmbH

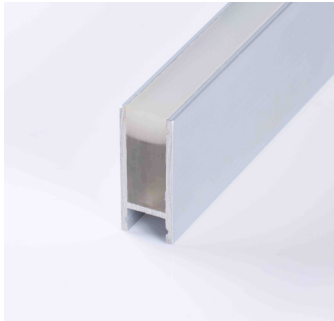
15mm

PROFILE OVERVIEW

24VDC, CRI >80
CCT: 2700K-6000K/RGB/RGBW/
Monocolour
Standard Length: 2000mm
(customisations available)
Diffuser: Opal White Polycarbonate
(IP20) |
Opal Polyurethane Encapsulated (IP67)

IP20

IP67



AA2
Surface | 15mm(W)x40mm(H)



AAS2
Surface | 15mm(W)x20mm(H)



AB1512
Surface | 15mm(W)x12mm(H)

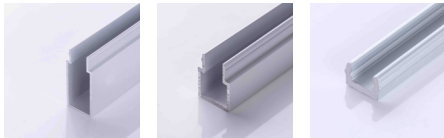


EA2
Recess | 15mm/23mm(W)x40mm(H)



EAS2
Recess | 15mm/23mm(W)x20mm(H)

BACK PROFILES



AWM2026 AWM2 AWP2

20mm

PROFILE OVERVIEW

24VDC, CRI >80
CCT: 2700K-6000K/RGB/RGBW/
Monocolour
Standard Length: 2000mm
(customisations available)
Diffuser: Opal White Polycarbonate
(IP20) |
Opal Polyurethane Encapsulated (IP67)

IP20

IP67



AA2020
Surface | 20mm(W)x22mm(H)



EA2020
Recess | 20mm/28mm(W)x22mm(H)

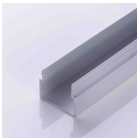


AA2020ARC
Surface | 20mm(W)x22mm(H)x8mm
(Raised)



AA2020R
Surface | 20mm(W)x22mm(H)x8mm
(Raised)

BACK PROFILE



AKF2010

25mm

PROFILE OVERVIEW

24VDC, CRI >80
CCT: 2700K-6000K/RGB/RGBW/
Monocolour
Standard Length: 2000mm
(customisations available)
Diffuser: Opal White Polycarbonate
(IP20) |
Opal Polyurethane Encapsulated (IP67)

IP20

IP67



AA3
Surface | 25mm(W)x40mm(H)



AAS3
Surface | 25mm(W)x20mm(H)



AAS3R
Surface | 25mm(w)x20mm/28mm(H)



AA3 Walkover
In-Ground Recess | 33mm/80mm(W)
x 58mm(H)

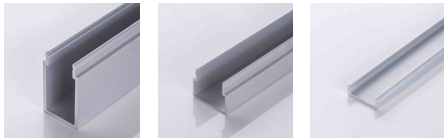


EA3
Recess | 25mm/33mm(W)x40mm(H)



EAS3
Recess | 25mm/33mm(W)x20mm(H)

BACK PROFILES



AKF3 AWM3 AWP3

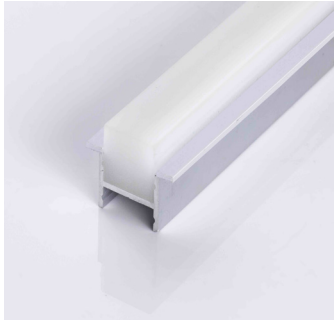
25mm

PROFILE OVERVIEW

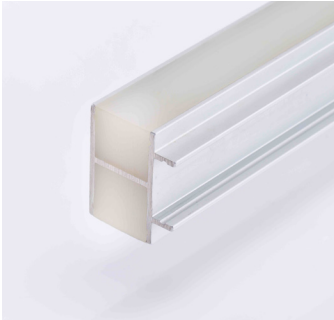
24VDC, CRI >80
CCT: 2700K-6000K/RGB/RGBW/
Monocolour
Standard Length: 2000mm
(customisations available)
Diffuser: Opal White Polycarbonate
(IP20) |
Opal Polyurethane Encapsulated (IP67)

IP20

IP67



EAS3R
Recess | 25mm/33mm(W)x28mm(H)



DWP43
Surface | 25mm/33mm(W)
x21mm/40mm(H)

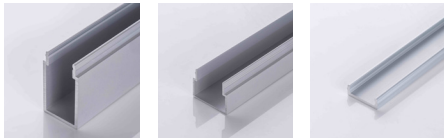


AAS3 Grazer
Surface | 25mm(W)x20mm(H)



AAS3 Grazer with Visor
Surface | 25mm(W)x20mm/50mm(H)

BACK PROFILES



AKF3 AWM3 AWP3

40mm

PROFILE OVERVIEW

24VDC, CRI >80
CCT: 2700K-6000K/RGB/RGBW/
Monocolour
Standard Length: 2000mm
(customisations available)
Diffuser: Opal White Polycarbonate
(IP20) |
Opal Polyurethane Encapsulated (IP67)

IP20 IP67



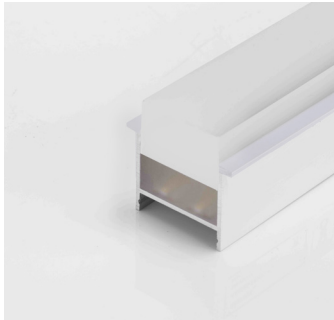
AA4035
Surface | 40mm(W)x35mm(H)



EA4035
Recess | 46mm/40mm(W)x35mm(H)

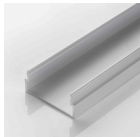


AA4035R
Surface | 40mm(W)x35mm/41mm(H)

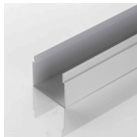


EA4035R
Recess | 46mm/40mm(W)
x35mm/41mm(H)

BACK PROFILES



AKF4010



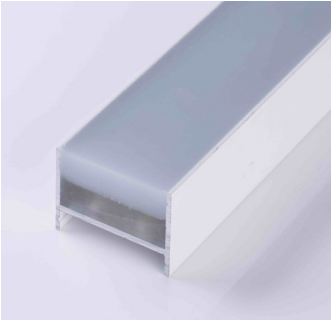
AWM4025

50mm | 80mm

PROFILE OVERVIEW

24VDC, CRI >80
CCT: 2700K-6000K/RGB/RGBW/
Monocolour
Standard Length: 2000mm
(customisations available)
Diffuser: Opal White Polycarbonate
(IP20) |
Opal Polyurethane Encapsulated (IP67)

IP20 IP67



AA5031
Surface | 50mm(W)x31.5mm(H)



AA5035GL
Surface | 50mm(W)x35mm(H)



AA5052GL
Surface | 50mm(W)x52mm(H)



AA7050
Surface | Suspended | 52mm(W)
x70mm(H)



Alurays DOTS
Surface | 50mm(W)x50mm(H)

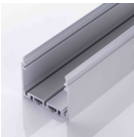


AA8035
Surface | 80mm(W)x35mm(H)

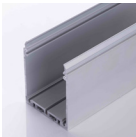
BACK PROFILES



AKF5017



AKF5035-SP



AKF5055-SP

BACK PROFILE



AKF8015

alurays_

LIGHTING TECHNOLOGY

OUR FACILITIES

GERMANY

Alurays Lighting Technology GmbH

Johann-G.-Gutenberg-Strasse 19 e/f
82140 Olching, Germany

+49 (8142) 4454 040
info@alurays.de
www.alurays.de

Please write to us on **info@alurays.de**
for project enquiries in Europe, Americas
and rest of the world

INDIA

Alurays Lighting Technology India Private Limited

B11-B12 , Gallops Industrial Park,
Vasna-Chacharwadi, Ahmedabad-Rajkot Highway,
Ahmedabad, Gujarat-382213, India

+91 9537695693 | +91 9727739209
info@alurays.in
alurays.co.in

Please write to us on **info@alurays.co.in** for project
enquiries in Middle East, APAC and details on our
channel partners

Website QR



<https://instagram.com/alurays.in>



[https://in.linkedin.com/company/
alurays-lighting-technology-india-
private-limited](https://in.linkedin.com/company/alurays-lighting-technology-india-private-limited)

DREAM LIGHT

DREAM LIGHT

DREAM LIGHT

DREAM LIGHT

DREAM LIGHT

DREAM LIGHT

DREAM LIGHT

DREAM LIGHT

DREAM LIGHT

DREAM LIGHT

DREAM LIGHT

DREAM LIGHT

DREAM LIGHT