

PRODUCT CATALOGUE



**Where performance
meets trust**



CONTACT US



**+91 93725 04211
+91 87798 37559**

2025



ABOUT US

WHO WE ARE

Welcome to Glutape India Pvt. Ltd. Established in 2013, we are a dynamic organization specializing in the Importing, converting, manufacturing, and distribution of cable ties, adhesive tape, sealant, aerosol spray paints, and allied products. As a leading solution provider, we offer a wide range of products designed for diverse applications across industries. Our unwavering commitment to quality is evident in our stringent quality control processes, ensuring that our products not only meet but exceed customer expectations.

Global associations with manufacturers and technology partners, we provide optimal product solutions and collaborate closely with customers on new product requirements. Our state-of-the-art laboratory supports our New Product Development team, enabling consistent innovation and enhancements to existing products. At Glutape India Pvt. Ltd., we take pride in our commitment to innovation, quality, and customer satisfaction. Our seamless integration of global expertise and local insight makes us the preferred choice for businesses seeking reliable and high performance solutions.

GLOBAL EXPORTS

- EUROPE
- AFRICA
- MIDDLE EAST
- SOUTH ASIA (SAARC)

CONTENTS

GRIPPEX

Masking Tape	03
Eva Foam Tape	03
Floor Marking Tape	03
Ultimate Mounting Tape	04
Brown Masking Paper	04
Cable Ties	04
Double-sided Tissue Tape	05
Double-sided PE Foam Tape	05
PVC Electrical Insulation Tape	05
Duct Tape	06
Cold Shrink Tube	06
Cross Filament Tape	06
Self Amalgamating Tape	07
Dry Wall Tape	07
PTFE Thread Seal Tape	07
Fiber Mesh Roll	08
Spacer Tape	08
Thermal Conductive Tape	09
Monofilament Tape	09
Mirror Mounting Tape	09
Anti-slip Tape	10
Fineline Masking	10
Double-sided polyester Tape	11
Single-sided Polyester Tape	11
Roller Masker	12
Butyl Tape	12

IGRIP

Masking Tape	13
Cloth Plate Mounting Tape	13
Bag Sealing Tape	14
PTFE Cloth Tape	14
PTFE Cloth	15
PET Cloth Tape	15

BIESSSE

Cushion Based Plate Mounting Tape	16
Filmic Based Plate Mounting Tape	16

SILFIX

PU Foam Sealant	17
Throttle Body & Carburetor Cleaner	18
Chain Cleaner & Lubricant	18
Paint & Lable Remover	18
Spray & Seal Waterproof Coating	19
Ultra Bond Construction Adhesive	19

IKULOR

Normal Spray Paint	20
Metalic Spray Paint	20
Fluorescent Spray Paint	20
Chrome Effect Spray Paint	21
Heat Resistant Spray Paint	21

ACHEM WONDER

PVC Electrical Insulation Tape	22
--------------------------------	----

MEHIKO WONDER

PVC Electrical Insulation Tape	23
--------------------------------	----

GRIPPO

PVC Electrical Insulation Tape	24
Masking Tape	24
PVC Electrical Insulation Joint Tape	25
PET Fleece Wire Harness Tape	25
HDPE Tape	26

SEALKING

Bag Sealing Tape	27
------------------	----

UMT

Ultimate Mounting Tape	28
------------------------	----

HENVY

Auto Hinges	29
-------------	----



MASKING TAPE

Grippex Masking Tape for general purpose use and home painting offers good and consistent conformability, temperature resistance, no residue after removal, along with many features and benefits. Suggest to be used for interior painting work, woodwork, furniture painting, home painting, automotive painting, hardware packing, office use and other similar general use purpose.



EVA FOAM TAPE

Experience superior adhesion and versatility with our EVA Foam Tape. Coated on both sides for maximum performance, it's ideal for automotive, house decorating, and industrial applications. Enjoy strong, durable stickiness with excellent vibration mitigation and crack resistance. Perfect for mounting, this tape offers reliable performance in various industries.



COLORS

FLOOR MARKING TAPE

Our Floor Marking Tape offers exceptional durability and visibility, ensuring safety and organization across various settings. Designed for easy application and removal, its strong adhesive guarantees secure placement indoors and outdoors. Ideal for marking hazardous areas, guiding traffic, and enhancing workspace efficiency.



ULTIMATE MOUNTING TAPE

Grippex Ultimate Mounting Tape delivers exceptional adhesive power, perfect for securely bonding materials like plastics, metals, and glass in any setting. With its acrylic foam construction and higher-formance adhesives, this tape is the go-to choice for durable, weather-resistant seals in automotive, solar, and general mounting applications.

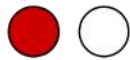
AVAILABLE THICKNESS

0.4, 0.8, 1.0, 1.2 and 2.0

FOAM COLORS



RELEASE LINER COLORS



BROWN MASKING PAPER

Experience the difference with Grippex Brown Masking Paper.

This versatile and eco-friendly solution is ideal for both residential and industrial applications. Its substantial weight ensures durability, while its easy-tear design and compatibility with most dispensers offer effortless application. Protect your floors, windows, and trim from paint drips and overspray with confidence. Choose Grippex for unmatched quality and professional results.

CABLE TIES

Explore our durable Cable Ties, designed for effortless organization and secure fastening. Ideal for multiple applications, these cable ties feature a strong locking mechanism and come in a range of sizes to meet all your needs. Perfect for tidying cables and wires, they offer reliability and versatility in one package.

SIZES

Length Available: 100 MM to 920 MM

Width Available: 1.8 MM to 9 MM



DOUBLE SIDED TISSUE TAPE

Double-Sided Tissue Tape is a professional-grade adhesive solution, perfect for securely bonding various materials such as leather, fabric, wood, plastic and more. It features a highgrade, strong adhesive on both sides, ensuring a firm hold for both similar and dissimilar surfaces. This tape is designed for ease of use in a wide array of applications, from light object mounting to other laminations also like flex, foam, and textile etc. Its superior adhesion and versatility make it an essential tool for professionals and DIY enthusiasts alike. Experience reliable, durable bonding with our Double-Sided Tissue Tape, crafted for excellence in every application.



DOUBLE SIDED PE FOAM TAPE

Discover the strength of our Double-Sided PE Foam Tape, designed for superior bonding in any environment. With its high-performance adhesive, it's perfect for automotive, home decor, and sealing applications. It is Shockproof and ensures a durable seal on a multitude of surfaces. Simplify mounting and sealing with our versatile.



PVC ELECTRICAL INSULATION TAPE

The Grippex self-adhesive PVC electrical insulation tape is a high-tensile strength tape and gives the additional benefit of excellent binding properties. It is used in electrical wiring, jointing kits of telecommunication cable, automotive cable harnesses & many other industrial like tube/pipe, etc. It acts as a barrier between the flame and the combustible core/insulation within the cable. It extends the fire-survival time of the cable and its function.

COLORS



DUCT TAPE

Discover the ultimate solution for all your repair and maintenance needs with our versatile duct tape. Engineered for superior adhesion, this waterproof and durable tape is perfect for a myriad of applications, from sealing and bundling to heavy-duty repairs on surfaces like wood, metal, and plastic. Easy to tear and apply, it stands out for its high tensile strength and flexibility, making it essential for household, DIY projects, and professional use. Choose our duct tape for a reliable, long-lasting bond in any condition.



COLD SHRINK TUBE

Discover our Cold Shrink Tube: a silicone rubber solution offering easy, tool-free installation and superior durability. Ideal for sealing and insulating electrical connections, it's perfect for indoor and outdoor use, ensuring a waterproof, tear-resistant seal in demanding environments.

CROSS FILAMENT TAPE

Grippex Filament Tape is a high-performance transparent tape reinforced along its length with continual glass-yam filament, which give the tape very high tensile strength. The backing provides excellent abrasion, moisture and scuff resistance. The Adhesive is an aggressive adhesive specially formulated to provide balanced performance, having both high adhesion and long-term holding power.

SIZES

Width: 12,24,36,48,72 & 96 MM

Length: 50 Mtrs

Also Available in Die Cuts



SELF AMALGAMATING TAPE

Introducing our EPR & Silicon Rubber-based Self Amalgamating Tape, designed for supreme flexibility and strength. This tape seamlessly stretches and self-bonds, offering a watertight, insulating barrier ideal for a wide range of applications. From electrical insulation to emergency plumbing fixes, its non-tacky, durable design stands up against moisture, UV, and extreme temperatures. A versatile tool for professionals and DIY enthusiasts, it ensures reliable, long-lasting protection with ease of use at its core.



DRYWALL TAPE

Grippex Drywall tape is made from mesh coated with acrylic self-adhesive latex, it is used for repairing the cracks, joints, or holes of plasterboard, drywall, gypsum board, cement board, or planar surface.

SIZES

Common Length: 20 M, 45 M, and 90 M

Common Width: 50 MM



PTFE TREAD SEAL TAPE

PTFE Thread Seal Tape is an ideal material for pipe sealing, including industrial and civil construction, machinery, gas and water system. With excellent characteristics of Grippex Thread Seal Tape such as sealing insurability, acid - resistance, and corrosion-resistance, it can be widely used under all conditions for a long term.

When you are joining threaded pipe to use for gas or water lines, you must use something to seal the joint so it doesn't leak. The best thing to use is PTFE THREAD SEALING TAPE on the male threads and pipe - joint compound on the female threads. The 1/2-inch-wide tape is the best choice for most piping.



FIBERGLASS MESH ROLL

Discover the strength and versatility of our Fiberglass Mesh Roll, the perfect solution for construction reinforcement and waterproofing needs. Its acrylic coating enhances water and alkali resistance, ensuring flexibility and longevity. Perfect for EIFS, roofing, and plaster projects, it provides robust protection and structural integrity. Elevate your construction endeavors with this essential, high-quality material.



SIZES

SEGMENT	MESH	GSM
Waterproofing	8 X 8	45
Construction	4 x 4	100
Construction	4 x 4	110
Construction	5 x 5	80
Construction	5 x 5	110
Construction	5 x 5	145
Construction	2.8 x 2.8	45

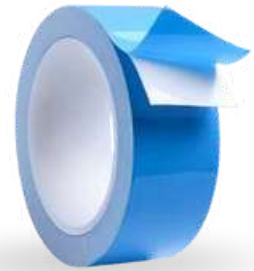


SPACER TAPE

EVA Foam Spacer Tape, crafted from Ethylene Vinyl Acetate, is a premium adhesive solution designed for professional use in sealing, cushioning, and creating precise gaps. Renowned for its exceptional durability and flexibility, this tape effectively withstands environmental challenges such as moisture, UV exposure, and temperature fluctuations. Its excellent vibration-dampening and thermal insulation properties make it indispensable in industries like automotive, electronics, and construction.

THERMAL CONDUCTIVE TAPE

Experience superior heat management with our Thermal Conductive Tape, available in two distinct versions to suit your specific needs. Our first variant is crafted from glass fabric and double-sided coated with a thermally conductive adhesive, providing efficient heat transfer and strong bonding. This version is ideal for mounting heat sinks onto microprocessors and other heat-generating electronic components. The second variant features a transfer adhesive, offering enhanced versatility and ease of application without the glass fabric backing. Both types ensure excellent thermal performance and flexibility, making them perfect for a wide range of electronic applications.



MONOFILAMENT TAPE

Experience unparalleled strength and durability with our Monofilament Tape. Reinforced with fiberglass filaments, this high-strength adhesive tape is designed for heavy-duty packaging and shipping applications. Its strong adhesive adheres securely to various surfaces, offering excellent resistance to tearing and puncturing. Ideal for bundling, securing heavy packages, and reinforcing containers, our Monofilament Tape ensures reliable protection and stability during transit.

MIRROR MOUNTING TAPE

Mirror mounting tape is an easy-to-apply foam-based tape that is ideally designed for attaching mirrors to various surfaces; like wooden surface tiles, stone, marble, granite, and fiberboard. It holds strongly to the substrate without screwing and resists moisture. It very smoothly conforms to substrates.



ANTI-SLIP TAPE

Grippex Anti Slip Tape is soft, easy to tear, and can be excellently adhered to different surfaces. There are many colours like Black, Yellow, Red, White, Grey, Blue, Brown, Fluorescent, Transparent, and Luminous.



FEATURES

Equipment: Skateboards, Scooters, Treadmills, Fitness equipment, Machine Tools, Printing Machine, Foot pedal, and the channel, stepped on the bus.

Place: Kindergartens, Schools, Swimming Pools, Home for the elderly, Subway stations, Parks, Hotels, Clubs, Kitchens, Bathrooms, Sports, Fitness and Recreation rooms, Entrances and Pedestrian ramps, Freight Yard, Working area and decks, and other places.

Can also be used for recreation and tour buses, boats, trailers, trucks, planes on a hanging ladder, and large or small power equipment.

SIZES

Width: 25 MM & 50 MM

Length: 3 Mtrs to 18 Mtrs

FINELINE MASKING TAPE

Our Fine Line Masking Tape ensures seamless paint separation and professional-grade results with its conformable backing and smooth trimmed edges. Compatible with various paint systems, it's ideal for automotive painting, band lettering, and complex applications, offering reliability and precision.

COLORS



DOUBLE SIDED POLYESTER TAPE

Double-sided polyester Tape features a strong acrylic adhesive and a red PE liner, making it perfect for mounting decorative profiles, moldings, and trim parts. With excellent thermal, abrasion, and chemical resistance, this tape is ideal for both indoor and outdoor projects requiring a reliable and affordable solution. Its good heat resistance and solvent resistance, combined with strong holding power, ensure long-lasting performance without adhesive deterioration. Suitable for film splicing, flex media joints, foam board fixing, and glass/acrylic sheet joining, this versatile tape meets a wide range of application needs.



SINGLE SIDED POLYESTER TAPE

Single sided polyester tape is designed for high-temperature applications such as epoxy powder coating and industrial splicing. It features a thin yet robust polyester backing combined with a solvent-resistant, high shear acrylic adhesive, making it ideal for environments with solvent exposure. This tape ensures clean removal without leaving adhesive residue and provides excellent temperature, chemical, and abrasion resistance. Its versatility extends to electrical insulation, surface protection, and automotive applications, delivering reliable performance across various industries.



ROLLER MASKER

Grippex Roller Masker is an effortless solution for masking and covering electronic appliances and large objects, protecting them during painting or woodworking activities. It features a high-density, non-porous film that holds securely for extended periods while leaving minimal residue upon removal. This versatile masker tape is perfect for use in painting, industrial, automotive, and packaging industries. The included cutter ensures precise and efficient trimming for each task, minimizing wastage. Ideal for masking windows, doors, air conditioners, refrigerators, cupboards, and kitchen drawers, Grippex Roller Masker delivers reliable protection with ease and speed.



SIZES:

Open size: 2400mm X 15mtrs

Butyl Tape

Grippex SealSure Waterproofing Tape is a high-performance, self-adhesive butyl tape reinforced with aluminium foil for ultimate durability and leak-proof sealing. Designed for a wide range of industrial, construction, and household applications, SealSure delivers instant waterproofing with minimal effort – just peel, stick, and seal.

Whether it's roof cracks, pipe leaks, metal ducts, or concrete gaps, this tape ensures a strong bond across surfaces like concrete, metal, tiles, and plastic.





MASKING TAPE

Masking Tape or Crepe paper masking tape is made of thin and easy to handle paper, and a smooth-easy release adhesive.

FEATURES

- Impression free removal & Good holding power
- Easy to tear, no edge lift & not tire after removing
- Natural rubber adhesive for immediate bond
- Resistant to strong solvents and paints

APPLICATIONS

- Bundling & Tabbings
- Adheres easily to wood
- PAinting & Automobile masking
- DIY Jobs & Everyday Use



CLOTH PLATE MOUNTING TAPE

Cloth Plate Mounting Tape is a robust, double-sided adhesive tape made from cotton cloth, designed specifically for the flexographic printing industry. This tape features a strong natural rubber adhesive on both sides, coated for optimal adhesion and durability. Its specialized cushioning adhesive enhances performance in halftone and solid/block printing by providing excellent temperature and humidity resistance. Ideal for mounting printing plates onto sleeves and cylinders, it also finds use in carpet installation, offering easy handling with its paper release liners.



BAG SEALING TAPE

Our I-Grip Bag Sealing Tape is expertly designed for soft packaging materials, offering an extensive selection unmatched in the market. Ideal for both resealable plastic bags and single-use applications, our tape ensures a secure seal every time. We are committed to excellence, crafting our I-Grip Bag Seal Tapes from the finest materials available and adhering to stringent industry standards to meet the diverse needs of our customers.



VERSION

- Temporary Bag Sealing Tape
- Permanent Bag Sealing Tape



PTFE CLOTH TAPE

Unlock unmatched durability and efficiency with our PTFE Cloth Tape, featuring a premium glass clothreinforced backing for superior tensile strength and resistance to wear. Engineered with a hightemperature-resistant silicone adhesive, this tape offers an exceptional non-stick, low-friction surface. Versatile across a wide range of temperatures, and Website Catalogue boasting excellent chemical resistance Experience the ultimate in reliability and quality, ensuring smooth operations with our PTFE Cloth Tape.

PTFE CLOTH

PTFE (Polytetrafluoroethylene) cloth laminated with fiberglass combines the non-stick and high-temperature resistant properties of PTFE with the strength and durability of fiberglass. This composite material is highly versatile and used in various industrial applications.



PET CLOTH TAPE

PET Cloth Tape is crafted from high-quality polyester fabric with a strong rubber-based adhesive, making it ideal for wire harnessing in automotive interiors. This tape offers exceptional protection against abrasion while

maintaining high adhesion and flexibility. It is free of critical substances, stable against rotting, and provides superior noise reduction and temperature stability. The extremely soft surface, high tear resistance, and media resistance make it a reliable choice for various applications requiring durability and easy handling.



CUSHION BASED PLATE MOUNTING TAPE

Enhance your flexo printing operations with our advanced cushion-based Biesse plate mounting tapes. Engineered for precision, these Biesse tapes feature a highresilience foam available in multiple compressibilities to deliver exceptional print quality, even during high-speed and long-run processes. Ideal for labels, flexible packaging, and pre-print cardboard applications, they ensure robust adhesion and effortless, residue-free removal, optimizing your production workflow.



FILMIC PLATE MOUNTING TAPE

Discover superior plate mounting with our Filmic Plate Mounting Tape from the Biesse range. Engineered with precision, our rigid adhesive tapes offer unmatched adhesion and thickness versatility, making them ideal for mounting printing plates on polyester carriers for post-print applications. Whether it's label printing or flexible packaging, trust our Filmic Plate Mounting Tape to deliver exceptional results with ease.





PU FOAM SEALANT

Discover Silfix® PU Foam Insulation Sealant, the ultimate solution for sealing, bonding, and soundproofing. Its one component polyurethane foam provides superior thermal and acoustic insulation, even below -10°C. Eco-friendly and moisture-cured, Silfix® ensures easy application and cost effective construction. Perfect for a wide range of building needs.

NET QUANTITY

750 Grams + 150 Grams (Extra) = 900 Grams



THROTTLE BODY & CARBURETOR CLEANER

Silfix Throttle Body & Carburetor Cleaner has a unique carbon release formula that penetrates, loosens and flushes away varnish oil and gum deposit from throttle body.

FEATURES

- Superior Formula & Increase Engine Power
- Remove Gum, varnish & carbon deposits effectively
- Clean the entire system, lubricate & remove moisture in all moving parts
- Maintain High Gas Mileage
- Improve start-up performance, improve acceleration, eliminate idle instability



CHAIN CLEANER & LUBRICANT

Silfix Chain Cleaner & Lubricant offers a deep cleaning & lubrication of all types of bike chains and other vehicle chains. It cleans all encrusted deposits like sand, soil, oil, grease, carbon residue, etc. It can infiltrate the areas of rust immediately and slacker rust, it decreases the noise, and corrosion caused by rust and protects your machine and your machinery and rust.

PAINT & LABEL REMOVER

Product is a kind of adhesive remover made of imported raw materials with special formula. It has so strong removing ability that it can tear down such sticky substances as self adhesive papers sticking to the surfaces of vehicle windows, vehicle bodies, paint film & marble, Also easily remove the residual adhesive paste. Spray it gentle & a satisfactory removing result can be reached.



SPRAY & SEAL WATERPROOF COATING

Silfix Spray & Seal Waterproof Coating is specially developed for leaky points such as roofs, exterior walls, fine seams, pipe openings, etc. in waterproof construction. It is suitable for narrow and complex spaces that are difficult to reach by paintings and tools and easily solve leakage problem. Silfix spray and seal is designed with anti corrosion and rust prevention functions. It is convenient to use and construct the bathroom and various complex part at room temperature. Good overall film formation, excellence rubber elasticity and high elongation, can adapt to the cracks and deformation requirements of the base.



ULTRA BOND - CONSTRUCTION ADHESIVE

Silfix® Ultra Bond Construction Adhesive provides professional-grade adhesion for a wide range of materials. The no nails and no screws formulation ensures high performance in construction applications. Ideal for indoor and outdoor use, this adhesive offers strong, durable bonding for wood, brick, plaster, metal, and more. Perfect for high-strength construction tasks where nails or screws are not feasible or preferred.



NORMAL SPRAY PAINT

This product is Aerosol Spray Paint made of advanced resin, pigments and auxiliaries. With characteristics of rapid drying, even delicate paint film, powerful, good atomization type and high spray rate. It is suitable for spraying and repairing surfaces of metal, wood, glass, leather and various substrates.



METALLIC SPRAY PAINT

This product is Aerosol Spray Paint made of advanced thermoplastic acrylic resin, metallic pigments and auxiliaries. Characteristics such as quick paint drying, great rigidity, adhesion and high resistance to impact. It can be used in decoration and provide goods protection to base material. Ideal application surface should include diversified metal, wood, glass, leather, ABS Plastic among other substrate.

FLUORESCENT SPRAY PAINT

This product is Aerosol Spray Paint with excellent fluorescent effect. The product have a superb drying time, and its ideally used for metals, surface treated wood, glass, ABS plastic and many other substrate.



CHROME EFFECT SPRAY PAINT

This product is Aerosol Spray Paint made of fine aluminum metallic pigment, specialized resin and auxiliaries. The paint film is of good mirror effect which can resist UV radiation, prolong life time of the coated object. The excellent appearance can be compared with electro-gilding.



HEAT RESISTANT SPRAY PAINT

This Aerosol Spray Paint is made of organic silicon resin, withstanding high temperature up to 500°C. The product figures easy operation, good spray-ability and high delivery rate. It is suitable for all type of substrate with high temperature like chimney, exhaust pipe and etc. Bring excellent protection against rust and UV radiation.



PVC ELECTRICAL INSULATION TAPE

Primarily meant for use as insulation tape in electrical wiring, it is also used in jointing kit of telecommunication cable, automotive cable harnesses & many other industrial like tube/pipe, etc.



FEATURES

- Automotive Cable Repairing & Harnessing.
- Embossed Film.
- Insulation of Cable Lugs in Meter Panels.
- Insulation of Electrical Wires.
- Telecom Towers Cable Jointing.
- Wire Winding for Submersible Pumps.
- Retardant tape- extinguishes the fire before it is propagated.
- High stability and excellent aging properties.
- Moisture and corrosion-resistant.
- Resistant to Acid, Alkalis, Oil, Grease & Gasoline.
- Non-migratory adhesive - Not Transferred from one face to another.
- Withstands up to 6500 v AC & provides long-lasting insulation thus saving from short circuits.
- Indoor & Outdoor applications - Weather resistant.
- High adhesion strength - Specially formulated house-made adhesive does not dry or allow the tape to be loosened.
- Made out of soft and stretchable PVC film, ideal to be used on any surface irrespective of shape.
- Soft, Stretchy, easy to unwind, good adhesive to adhere.
- Excellent mechanical support at high temp. (Up to 80 C).
- Uniform lead-free PVC film thickness tape width & assured length.



PVC ELECTRICAL INSULATION TAPE

Primarily meant for use as insulation tape in electrical wiring, it is also used in jointing kit of telecommunication cable, automotive cable harness & many other industrial like tube / pipe etc.

FEATURES

- Automotive Cable Repairing & Harnessing.
- Insulation of Cable Lugs in Meter Panels.
- Insulation of Electrical Wires.
- Telecom Towers Cable Jointing.
- Wire Winding for Submersible Pumps.
- Retardant tape- extinguishes the fire before it is propagated.
- High stability and excellent aging properties.
- Moisture and corrosion-resistant.
- Resistant to Acid, Alkalis, Oil, Grease & Gasoline.
- Non-migratory adhesive - Not Transferred from one face to another.
- Withstands up to 6500 v AC & provides long-lasting insulation thus saving from short circuits.
- Indoor & Outdoor applications - Weather resistant.
- High adhesion strength - Specially formulated house-made adhesive does not dry or allow the tape to be loosened.
- Made out of soft and stretchable PVC film, ideal to be used on any surface irrespective of shape.
- Soft, Stretchy, easy to unwind, good adhesive to adhere.
- Excellent mechanical support at high temp. (Up to 80 C).
- Uniform lead-free PVC film thickness tape width & assured length.





PVC ELECTRICAL INSULATION CABLE TAPE

A premium-grade plasticised PVC film, coated with an aggressive rubber-based adhesive, features excellent characteristics. It's suitable for continuous use at high temperatures while offering good electric flammability resistance and a soft texture. The adhesive is resistant to most chemical substances and humidity. Our product line includes variants:

- 1. ROHS-Compliant:** Ensures adherence to ROHS standards for environmental safety.
- 2. REACH-Compliant:** Meets REACH regulations for chemical safety compliance.
- 3. High Temperature:** Maintains strong performance at consistently high temperatures.

All variants are designed for exceptional performance while maintaining compliance with ROHS and REACH standards.



MASKING TAPE

GripPO Masking Tape for general purpose use and home painting offers good and consistent conformability, temperature resistance, no residue after removal, along with many features and benefits. Suggest to be used for interior painting work, woodwork, furniture painting, home painting, automotive painting, hardware packing, office use and other similar general use purpose.

PVC ELECTRICAL INSULATION JOINT TAPE

PVC Splicing tape for wire harness is a premium grade plasticized PVC film coated with an aggressive rubber bases adhesive with good characteristics. it is suitable for continuous use at 80 degree celsius with good electric flammability and soft property, not influenced by most chemicals substance and humidity. it complies with RoHS and REACH requirement.



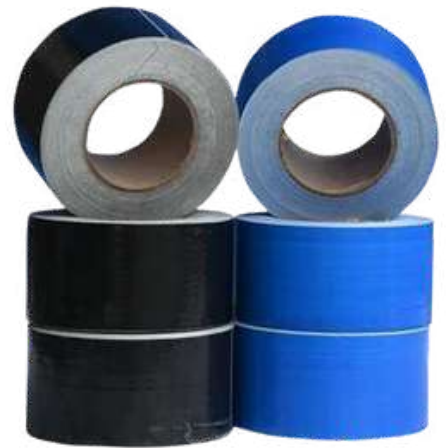
PET FLEECE WIRE HARNESS TAPE

PET Fleece Wire Harness Tape is the ideal choice for automotive and marine wiring applications, offering unparalleled durability and flexibility. It provides excellent resistance to chemicals, abrasion, and moisture, ensuring reliable insulation and protection. This tape excels in noise reduction, is tear-resistant for secure bundling, and remains flexible to support easy harness assembly. Its rubber-based adhesive is optimized for manual application, guaranteeing a stable and smooth performance across various conditions.



HDPE TAPE

High-Density Polyethylene (HDPE) Tape is a versatile and durable solution designed to meet the needs of a wide range of industrial and commercial applications. Manufactured using premium-grade HDPE material, this tape offers outstanding performance and reliability, making it the ideal choice for demanding tasks.





BAG SEALING TAPE

Our bag-sealing tape is designed for soft packaging materials and is perfect for both resealable and non-reusable plastic bags. We offer one of the widest selections in the market, revolutionising traditional bag sealing methods. At Seal King, we've set a new global standard for bag sealing with our innovative approach.

Resealable Bag Sealing Tape - Suitable for sealing OPP Bags, PP Bags, and PE Bags.

The excellent adhesion works well on surfaces of a variety of plastic bags and enables repeated opening and closing. It is stable. It's special fingerlift design ensures removal and light release.

Permanent Bag Sealing Tape - Suitable for sealing courier bags.

Seal King's range of permanents with aggressive adhesive, good initial tack, and excellent thermal stability, suitable for permanent bag sealing application. Bags will be damaged once opened.

Quality

Following ISO 9000 management spirit, Seal King emphasis on every tiny detail to excellence. Stable and reliable quality is always treated as a must which Seal King has always been endeavouring to accomplish.





ULTIMATE MOUNTING TAPE

UMT Ultimate Mounting Tape delivers exceptional adhesive power, perfect for securely bonding materials like plastics, metals, and glass in any setting. With its acrylic foam construction and high-performance adhesives, this tape is the go-to choice for durable, weather-resistant seals in automotive, solar, and general mounting applications.



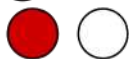
AVAILABLE THICKNESS

0.4, 0.8, 1.0, 1.2 and 2.0

FOAM COLORS



RELEASE LINER COLORS





AUTO HINGES

Henry Auto Hinges offer superior performance, precision engineering, and lasting durability for all your cabinetry needs. Whether you're building modular kitchens or custom wardrobes, our soft-close and regular hinge options are built to deliver strength, smooth movement, and elegant functionality.

PRODUCT VARIANTS

Regular-2D / Soft Close-2D / Soft Close-3D





BRAND WE PROMOTE

GRIPPEX[®]

BIENNE[®]
Your challenges, our mission

iKulor[®]
Be Bold

 **ESTAPE**[®]

GRIPPO[®]

SILFIX[®]

 **王佳膠帶**
SEALKING

UMT[®]

I-GRIP[®]
HIGH PERFORMANCE TAPES

ACHEM Wonder[®]

Henvy[®]

Mehiko wonder[™]
Made By Taiwan Technology



CONTACT DETAILS



Glutape India Pvt Ltd 702, 7th flr, Sri Krishna Bldg, New Link Road, Opp. Laxmi Indus. Estate, Andheri-West, Mumbai, Maharashtra 400 053.



+91- 8779837559 / +91 93725 04211



www.glutape.com



csm@glutape.com



cs02@glutape.com



contact@glutape.com



Company Profile